

SYSTEM CORLO

High quality materials and elegant design

Real glass surfaces and metal frames make the touch displays, push buttons and power outlets of *System Corlo* a highlight of high class interiors.

CORLO ADAPTS TO THE ROOM

The *System Corlo* frames are available with a chrome-plated matt or glossy edge, white matt edge and black matt edge. Custom colours for an individual interior design are also possible. Your colour concept can be further customised with the Corlo Touch's variable ambient lighting. For display, push button and power outlet, you have a choice of white or black glass surfaces.

CORLO IS EASY TO INSTALL

All components of *System Corlo* are installed in standard sockets. Frames are available as 1-, 2- or 3-gang version. The Wireless push buttons Corlo P RF can be mounted without a socket directly on the wall with special frames *Corlo Plane*.



Corlo Push Button M2-T, chrome matt



Corlo Power Outlet, chrome matt



Corlo Push Button M1-T, chrome glossy



Corlo Power Outlet, chrome glossy



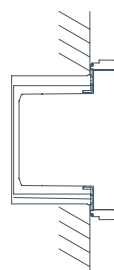
Corlo Touch KNX



black matt



white matt



Plan Corlo Touch in switch socket



2013



Awards for Corlo Touch KNX

CORLO TOUCH KNX

Touch Switch and Display for 

TOUCH SWITCH FOR ILLUMINATION, BLINDS, SCENES ...

Switches when the surface is touched. The device reacts instantly on approach, when in energy-saving sleep mode.

INTELLIGENT OPERATING PANEL FOR ROOM AUTOMATION

Graphical menus for setting of shading, ventilation and room conditions. Automatic functions can also be configured in the ETS.

INFO SCREEN FOR PHOTOS, MESSAGES AND MEASURED VALUES

High-resolution 3.5 inch display with brightness sensor for automatic adjustment of the display to ambient brightness. Shows current weather data, room data or messages from the KNX bus system. Personalised screensaver with your own photos.

N° 50352 | Version 14.07.2016 | Errors excepted. Subject to technical changes.



German Design Award

NOMINEE 2014



product design award

2014



interior innovation award 2014 Selection



reddot award 2014 winner

Awards for System Corlo

CORLO TOUCH KNX FEATURES OVERVIEW

- Proximity sensor
- Variable ambient lighting
- 10 pages can be configured individually, with areas for operating elements and display
- 5 automatic channels
- KNX connection for data transmission
- 4 inputs for binary contact or temperature sensor
- Micro SD card slot (data storage for photos and icons)
- USB interface
- Operating voltage 24 V DC $\pm 10\%$

EXTENDED MODEL CORLO TOUCH KNX WL

- Wi-Fi connection
- Display of network content (e. g. defined web sites, camera footage, visualisation)
- Smartphone control



INNOVATION PRIZE

2015



PLUS X AWARD

BEST PRODUCT 2016/2017



PLUS X AWARD

2016 honored for High Quality Design Ease of Use Functionality

elsner
elektronik

PUSH BUTTONS & POWER OUTLET

for System Corlo

CORLO POWER OUTLET

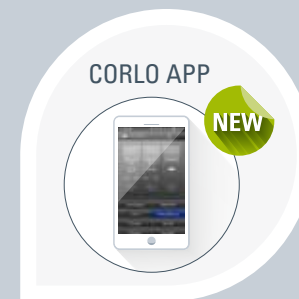
The CEE 7/4 socket for System Corlo has got an integrated increased contact protection that makes the power outlet child-proof.

CORLO PUSH BUTTON M-T

The single or double push buttons have got an integrated room temperature sensor. The temperature value can be interpreted by the display Corlo Touch KNX. The push buttons are suited for conventional electrical installation, relay controls and PLC and match the WS1 and WS1000 control systems. By using push button interfaces, such as Elsner KNX B4-UP, the Corlo M-T become KNX bus push buttons.

CORLO WIRELESS PUSH BUTTON P RF

The push buttons receive their energy for sending wireless signals through integrated solar cells. The solar power is stored in an energy buffer, so the additionally included lithium battery only needs to step in during a longer absence of daylight. The push buttons are suited for the control systems WS1, WS1000, Solexa II and direct manual control of all devices devices using the Elsner wireless protocol RF (e. g. ventilation units, relays, motor control units).



The *Corlo Mobile App* for Corlo Touch KNX WL allows you to make all of the settings via smartphone or tablet PC. The app can be downloaded for Apple iOS or Android.