

KNX Components for Building Automation

Catalogue

arcus-eds

Arcus-EDS GmbH
Rigaer Str. 88
10247 Berlin, Germany

www.arcus-eds.de

© Arcus-EDS GmbH
July 2024



Navigation

VISUALIZATION



HVAC



ACTUATORS



SPECIAL SENSORS S8



GATEWAYS



SMART METERING



LIGHTING



SYSTEM DEVICES



COMPONENTS / REPLACEMENT PARTS



IMPRINT

Visualization and Control in KNX Systems



Touch_IT 4.3" IPS Colour Display with Touchscreen

Touch_IT AC4



Micro USB

Micro SD slot

Low mounting depth

external
Temperature sensor

Aluminium housing

80,5 x 128 x 10,5 mm

Mounting horizontally or vertically

Mounting ring on Flush-mounted box 60/68mm)

Touch_IT AC4
IP65

Aluminium housing

80 x 130 x 28 mm

IP65

Touch_IT 4.3" Functional Overview

The 4.3" IPS color display with capacitive touchscreen is used for visualization and control in the KNX bus.

- Central control of various devices in the KNX System: lighting (switching, dimming, RGB color selector), blinds, heating, ventilation, multi-room audio systems, ...
- Acoustic and optic alarm functions
- Display of object states as plain text
- Datalogging and on display diagram facility
- Internal scenes with 32 action objects and programmable delays
- Logic functions can be implemented in scripting language
- Internal KNX Datalogger
- Each page and element can be protected by global or dedicated passwords
- Many languages
- Possibility for user defined layouts, icons, screensavers etc

Technical Data

- 4,3" IPS Display with 800 x 480 pixels and 16M colors
- Capacitive touchscreen interface
- Linux operating system for easy system extension
- Micro SD-Card slot for memory extensions (SD card not incl.)
- USB-port for configuration and extension
- Internal temperature sensor with IR measurement
- Powersupply 24-32V with 2nd wire pair or via USB-port
- KNX bus load <=10mA

Programming

- Complete configuration via ETS5®
- Login via USB
- Different themes dark/bright
- >70 different functions for each GUI element
- Up to 6 pages with up to 8 GUI-elements freely configurable
- 1-4 Objekts per GUI element
- Different timers with weekly timeclock or astronomic-clock
- Single elements or whole pages can be secured by PIN
- Internal Room Temperature Control with internal or external measurement
- Logical functions with Lua scripts and KNX library freely configurable

Mounting

- Attachment with support ring for 60 / 68 mm in-wall
- Theft protection by hidden Allen screw

With the free Arcus software Touch_IT-Creator you can create custom layouts, icons or screensavers for your Touch_IT

More information on request





Touch_IT AC4

Article	Article Description	Article No.
Touch_IT-AC4	Aluminium sanded anodized	22414103
Touch_IT-AC4	Aluminium sanded black anodized	22414104



Touch_IT AC4 IP65

Article	Article Description	Article No.
Touch_IT-AC4-IP65	Aluminium sanded anodized	22414065

Touch_IT 3.5" TFT Colour Display with Touchscreen

Touch_IT AC35



80 x 80 x 12 mm



- 12 mm depth
- Integrated infrared temperature sensor
- Mini USB connection
- External micro SD slot

Touch_IT PC35



95 x 95 x 14 mm

- Integrated temperature sensor

Touch_IT 3.5" Functional Overview

The **3.5" TFT colour display** with touchscreen serves for visualization and control in KNX Systems.

- Switching and dimming of lighting
- RGB control with colour picker
- Acoustic and optic alarm functions
- Alarm display of motion detectors or object states as plain text
- Setting and display of heating regulation parameters
- Control of multi room audio-systems
- Weekly clock timer
- Astronomic clock timer for sunset/sunrise driven controls
- Data logging and charts on display
- Internal scenes with 32 action objects and programmable delays
- Logic functions can be implemented in a scripting language
- Separate display page for alarm settings
- Access protection via global or dedicated passwords
- Possibility for user defined layouts, icons, screensavers etc.

Technical Data

- 3.5" - TFT colour display with touchscreen 320 x 240 RGB
- 32-Bit-ARM-Prozessor, 1 GHz, 8 GByte Flash-Speicher
- MicroSD Slot (for SD / SDHC cards)
- Micro USB Port
- Linux operating system
- Integrated infrared temperature sensor (AC35)
- Integrated temperature sensor (PC35)

Mounting

- Attachment with support ring for 60 / 68 mm in-wall
- Also suitable for Swiss systems
- Theft protection by hidden Allen screw

Programming

- ETS programmable
- 6 Pages with up to 8 control elements each
- Up to 4 KNX objects per control element
- USB tool for individual upload of control icons, images, screensavers etc.

Environmental conditions

Storage:	-5 ... +60°C
Operating:	-5 ... +55°C
Humidity:	max. 90% non-condensing

Power supply

Auxiliary power:	9 ... 32 VDC
Consumption:	active: 1,5W
	standby: < 0,5W

With the free Arcus software Touch_IT-Creator you can create custom layouts, icons or screensavers for your Touch_IT.

More information on request.



Touch_IT-Creator

arcus-eds

Content
☰



Touch_IT AC35

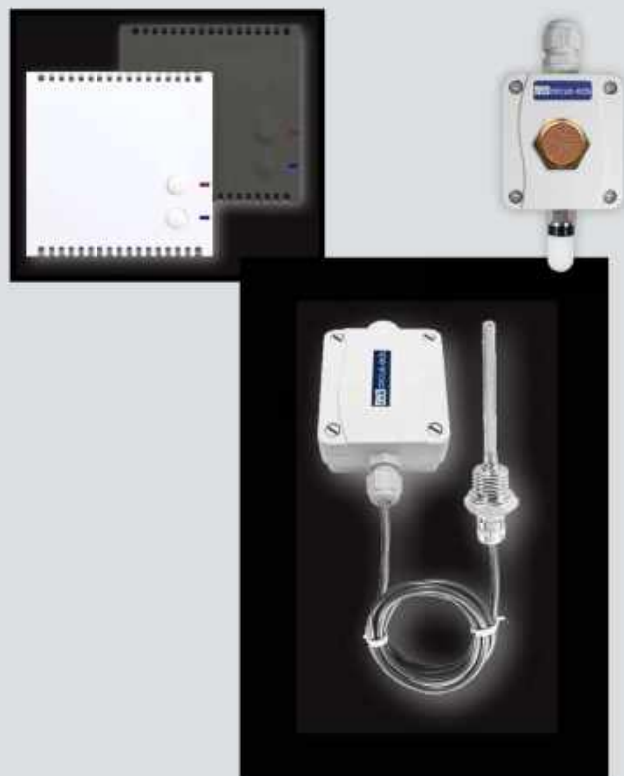
Article	Article Description	Article No.
Touch_IT-AC35	Aluminium anodized	22413103
Touch_IT-AC35 black	Aluminium black anodized	22413104



Touch_IT PC35

Article	Article Description	Article No.
Touch_IT-PC35	white plastic	22413201
Touch_IT-PC35	black plastic	22413204

KNX Sensor Systems for HVAC Applications



HVAC-Application HLK 305

Functions of the HVAC-Application HLK 305

KNX sensors / controllers with integrated KNX Bus Interface for detection and control of indoor air parameters. The sensor has a variety of other functions that can be found in the corresponding product page.

No auxiliary voltage necessary.

Measured Values

- Air temperature (sensor in the housing) also weighted with external temperature
- Relative humidity
- CO2 or VOC concentration (sensor in the housing)
- Additional floor, ceiling or component temperature (external PT1000)
- Lux (SK10L)

Calculation and Limit Values

- Absolute humidity, dew point and enthalpy
- Detection of minimum- and maximum temperature
- Heat- and frost-alarm
- Limits for temperature

Control Functions

- Control functions for heating and cooling applications (can be combined)
- Setpoint temperatures for Comfort, Standby, Economy and Protection, selectable via KNX HVAC objects
- Controller output 0..100% or programmable

Control and Report

- Two binary inputs
- Additional two binary inputs (SK30)
- Two Push Buttons (SK30 front)
- Rotary Controller instead of Push Buttons (SK30 front)
- Light control as switch/button with short, long and double function
- Dimmer
- Blind and shutter control
- Temperature adjustment
- Different operating states can be displayed with LED (SK30 front)

Logic

- Four logic blocks for the logical link between internal and external signals
- 10 associated logic inputs/outputs



TC - Temperature / Climate

Temperature / RTR + additional Functions + CO₂ / VOC

Measured Values

- Air temperature (sensor in the housing) also weighted with external temperature
- Air quality CO₂- or VOC concentration
- Lux (SK10L)

Calculation and Limit Values

- Detection of minimum- and maximum-temperature
- Heat- and frost-alarm
- Limits for temperature

Control Functions / Control and Report / Logic

Application HLK 305 complete

TC

THC - Temperature / Humidity / Climate

Temperature / Humidity / RTR + additional Functions + CO₂ / VOC

Measured Values

- Air temperature (sensor in the housing) also weighted with external temperature
- Relative humidity
- Air quality CO₂- or VOC concentration
- Lux (SK10L)

Calculation and Limit Values

- Absolute humidity, dew point and enthalpy
- Detection of minimum- and maximum temperature
- Heat- and frost-alarm
- Limits for temperature

Control Functions / Control and Report / Logic

Application HLK 305 complete

THC

TTHC - Temperature / Temperature / Humidity / Climate

Temperature / Temperature / Humidity / RTR + additional Functions + CO₂ / VOC

Measured Values

- Air temperature (sensor in the housing) also weighted with external temperature
- Relative humidity
- Air quality CO₂- or VOC concentration
- Additional floor, ceiling or component temperature (external PT1000)
- Lux (SK10L)

Calculation and Limit Values

- Absolute humidity, dew point and enthalpy
- Detection of minimum- and maximum-temperature
- Heat- and frost-alarm
- Limits for temperature

Control Functions / Control and Report / Logic

Application HLK 305 complete

TTHC

KNX Sensor Systems for HVAC Applications - Application HLK 305

TC - Temperature / RTR

+ additional Functions + CO2 / VOC

arcus-eds

Content



NEO-TC



NEO-TC-x



NEO-TC-CO2



NEO-TC-VOC

SK30-TC



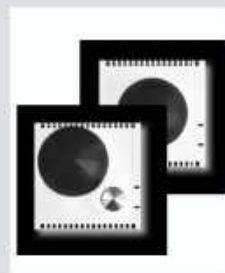
SK30-TC



SK30-TC-PB



SK30-TC-R



SK30-TC-RSTF
SK30-TC-RSTF-R



SK30-TC-CO2



SK30-TC-CO2-PB



SK30-TC-CO2-R



SK30-TC-VOC



SK30-TC-VOC-PB



SK30-TC-VOC-R

SK20-TC



SK20-TC-2B



SK20-TC-CO2-2B



SK20-TC-VOC-2B

KNX Sensor Systems for HVAC Applications - Application HLK 305

TC - Temperature / RTR

+ additional Functions + CO2 / VOC

arcus-eds

Content
☰

C
HLK
305

SK07-TC



SK07-TC-6B



PT1000-SK07

SK10L-TC

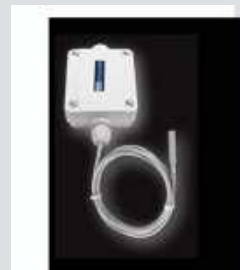


SK10L-TC-L

SK10-TC



SK10-TC



SK10-TC-OFTF



SK10-TC-HTF



SK10-TC-GTF-TPE



SK10-TC-ALTF1



SK10-TC-ALTF2



SK10-TC-ATF



SK10-TC-ESTF



SK10-TC-ETF2



SK10-TC-ETF3



SK10-TC-ETF7



SK10-TC-KTF1



SK10-TC-RPTF1



SK10-TC-RPTF2



SK10-TC-RSTF

TC

NEO-THC



NEO-THC-x



NEO-THC-CO2



NEO-THC-VOC

SK30-THC



SK30-THC



SK30-THC-PB



SK30-THC-R



SK30-THC-CO2



SK30-THC-CO2-PB



SK30-THC-CO2-R



SK30-THC-VOC



SK30-THC-VOC-PB



SK30-THC-VOC-R

SK20-THC



SK20-THC-2B



SK20-THC-CO2-2B



SK20-THC-VOC-2B

KNX Sensor Systems for HVAC Applications - Application HLK 305

THC - Temperature / Humidity / RTR

+ additional Functions + CO₂ / VOC

arcus-eds

Content



C

HLK
305

SK07-THC



SK07-THC-4B



HTU21-SK07

SK10-THC



SK10-THC-AFF



SK10L-THC-L-AFF



SK10-THC-CO₂-AFF



SK10-THC-VOC-AFF



SK10-THC-ALKF1



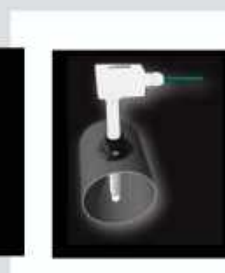
SK10-THC-ALKF2



SK10-THC-KFF



SK10-THC-CO₂-KF



SK10-THC-VOC-KF



MMF



SK10-THC-CO₂-RPFF



MMF

THC

NEO-TTHC



NEO-TTHC-x

SK30-TTHC



SK30-TTHC



SK30-TTHC-PB



SK30-TTHC-R



SK30-TTHC-CO₂



SK30-TTHC-VOC

SK20-TTHC



SK20-TTHC-2B

KNX Sensor Systems for HVAC Applications - Application HLK 305

TTHC - Temperature / Temperature / Humidity / RTR

+ additional Functions + CO₂ / VOC

arcus-eds

Content



C

HLK
305

SK07-TTHC



SK07-TTHC-4B

SK10-TTHC



SK10L-TTHC-L-AFF



SK10-TTHC-AFF



SK10-TTHC-RPFF



SK10-TTHC-RPFF-MFF



SK10-TTHC-KFF

TTHC



An additional PT1000 probe for surface mounting, screwing in or contacting can be ordered. (See section Z, Components / Replacement Parts)

KNX Sensor Systems for HVAC Applications - Application HLK 305

TC - Temperature / RTR

+ additional Functions + CO₂ / VOC

TC

KNX Sensor Systems for HVAC Applications - Application HLK 305

TC - Temperature / RTR
+ additional Functions + CO2 / VOC

arcus-eds

AQS	Aluminum, square, sanded
AQB	Aluminum, square, sanded, black



Neo-TC-x

KNX Sensor / Controller Temperature
Binary Inputs + Additional Functions

Operating temperature: -25 .. + 80 °C
Measured temperature range: -25 .. + 80 °C

IP20 Aluminum housing 80 x 80 cm
for (60/68 mm) flush-mounted socket

Article	Article No.
Neo-TC-AQS	30511583
Neo-TC-AQB	30511584

Neo-TC-CO2-x

KNX Sensor / Controller Temperature
CO2 Concentration
Binary Inputs + Additional Functions

Operating temperature: -10 .. + 50 °C
Measured temperature range: -10 .. + 50 °C
Measured CO2 range: 400 - 5000 ppm

IP20 Aluminum housing 80 x 80 cm
for (60/68 mm) flush-mounted socket

Article	Article No.
Neo-TC-CO2-AQS	30512563
Neo-TC-CO2-AQB	30512564



Neo-TC-VOC-x

KNX Sensor / Controller Temperature
VOC Concentration
Binary Inputs + Additional Functions

Operating temperature: -25 .. + 80 °C
Measured temperature range: -25 .. + 80 °C
Measured VOC range: 400 - 10 000 ppm CO2 equivalent

IP20 Aluminum housing 80 x 80 cm
for (60/68 mm) flush-mounted socket

Article	Article No.
Neo-TC-VOC-AQS	30513563
Neo-TC-VOC-AQB	30513564





SK30-TC

KNX Sensor / Controller Temperature
Binary Inputs + Additional Functions

Operating temperature: -25 .. +80 °C
Measured temperature range: -25 .. +80 °C

IP20 Plastic housing in 55mm standard size

Article	Article No.
SK30-TC white	30511361
SK30-TC ultra dark grey	30511362



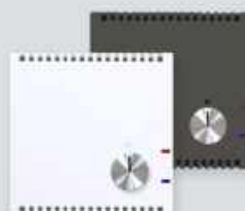
SK30-TC-PB

KNX Sensor / Controller Temperature
Push Buttons
Binary Inputs + Additional Functions

Operating temperature: -25 .. +80 °C
Measured temperature range: -25 .. +80 °C

IP20 Plastic housing in 55mm standard size

Article	Article No.
SK30-TC-PB white	30511371
SK30-TC-PB ultra dark grey	30511372



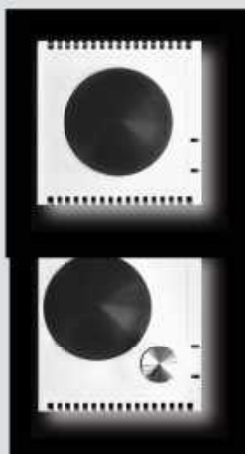
SK30-TC-R

KNX Sensor / Controller Temperature
Rotary Controller
Binary Inputs + Additional Functions

Operating temperature: -25 .. +80 °C
Measured temperature range: -25 .. +80 °C

IP20 Plastic housing in 55mm standard size

Article	Article No.
SK30-TC-R white	30511351
SK30-TC-R ultra dark grey	30511352



SK30-TC-RSTF / SK30-TC-RSTF-R

KNX Sensor / Controller Temperature
optional Rotary Controller

The temperature probe PT1000 is in a black plastic sphere (Ø 50 mm)

The dark radiation probe detects radiation and radiation heat.

Operating temperature: -5 .. +60 °C
Measuring range: -5 .. +60 °C

IP20 Plastic housing in 55mm standard size

Article	Article No.
SK30-TC-RSTF	30516361
SK30-TC-RSTF-R	30516351

KNX Sensor Systems for HVAC Applications - Application HLK 305

TC - Temperature / RTR
+ additional Functions + CO2 / VOC

arcus-eds



SK30-TC-CO2

KNX Sensor / Controller Temperature
CO2 Concentration
Binary Inputs+ Additional Functions

Operating temperature: -10 .. +50 °C
Measured temperature range: -10 .. +50 °C
Measured CO2 range: 400 - 5000 ppm

IP20 Plastic housing in 55mm standard size

Article	Article No.
SK30-TC-CO2 white	30512361
SK30-TC-CO2 ultra dark grey	30512362



SK30-TC-CO2-PB

KNX Sensor / Controller Temperature
CO2 Concentration, Push Buttons
Binary Inputs+ Additional Functions

Operating temperature: -10 .. +50 °C
Measured temperature range: -10 .. +50 °C
Measured CO2 range: 400 - 5000 ppm

IP20 Plastic housing in 55mm standard size

Article	Article No.
SK30-TC-CO2-PB white	30512371
SK30-TC-CO2-PB ultra dark grey	30512372



SK30-TC-CO2-R

KNX Sensor / Controller Temperature
CO2 Concentration, Rotary Controller
Binary Inputs+ Additional Functions

Operating temperature: -10 .. +50 °C
Measured temperature range: -10 .. +50 °C
Measured CO2 range: 400 - 5000 ppm

IP20 Plastic housing in 55mm standard size

Article	Article No.
SK30-TC-CO2-R white	30512351
SK30-TC-CO2-R ultra dark grey	30512352



SK30-TC-VOC

KNX Sensor / Controller Temperature
VOC Concentration
Binary Inputs + Additional Functions

Operating temperature: -25 ... +80 °C
Measured temperature range: -25 ... +80 °C
Measured VOC range: 400 - 10 000 ppm CO2 Äquivalent

IP20 Plastic housing in 55mm standard size

Article	Article No.
SK30-TC-VOC white	30513361
SK30-TC-VOC ultra dark grey	30513362



SK30-TC-VOC-PB

KNX Sensor / Controller Temperature
VOC Concentration, Push Buttons
Binary Inputs + Additional Functions

Operating temperature: -25 ... +80 °C
Measured temperature range: -25 ... +80 °C
Measured VOC range: 400 - 10 000 ppm CO2 Äquivalent

IP20 Plastic housing in 55mm standard size

Article	Article No.
SK30-TC-VOC-PB white	30513371
SK30-TC-VOC-PB ultra dark grey	30513372



SK30-TC-VOC-R

KNX Sensor / Controller Temperature
VOC Concentration, Rotary Controller
Binary Inputs + Additional Functions

Operating temperature: -25 ... +80 °C
Measured temperature range: -25 ... +80 °C
Measured VOC range: 400 - 10 000 ppm CO2 Äquivalent

IP20 Plastic housing in 55mm standard size

Article	Article No.
SK30-TC-VOC-R white	30513351
SK30-TC-VOC-R ultra dark grey	30513352

KNX Sensor Systems for HVAC Applications - Application HLK 305

TC - Temperature / RTR
+ additional Functions + CO2 / VOC

arcus-eds



SK20-TC-2B

KNX Sensor / Controller Temperature
Binary Inputs

Operating temperature: -25 .. +80 °C
Measured temperature range: -25 .. +80 °C

IP20 Plastic housing (71 x 71 x 25) mm

Article	Article No.
SK20-TC-2B	30511261



SK20-TC-CO2-2B

KNX Sensor / Controller Temperature
CO2 Concentration
Binary Inputs

Operating temperature: -10 .. +50 °C
Measured temperature range: -10 .. +50 °C
Measured CO2 range: 400 - 5000 ppm

IP20 Plastic housing (71 x 71 x 25) mm

Article	Article No.
SK20-TC-CO2-2B	30512261



SK20-TC-VOC-2B

KNX Sensor / Controller Temperature
VOC Concentration
Binary Inputs

Operating temperature: -25 .. +80 °C
Measured temperature range: -25 .. +80 °C
Measured VOC range: 400 - 10 000 ppm CO2 Äquivalent

IP20 Plastic housing (71 x 71 x 25) mm

Article	Article No.
SK20-TC-VOC-2B	30513261



SK07-TC-6B

KNX Sensor / Controller Temperature

Connection for temperature sensor PT1000

6 button inputs

Two switch inputs can be configured as outputs at 3VDC(1mA)

Operating temperature (module): -25 ... +80 °C

Measurement range PT1000: -50 ... +400 °C

IP20 Plastic housing (50 x 50 x 20) mm

Delivery without temperature sensor

Article

Article No.

SK07-TC-6B

30510790



Temperature probe PT1000, assembled for SK07

Measured temperature range: -50 ... +150 °C

Connecting cable: PVC 10 cm

Article

Article No.

PT1000-SK07

99101071

SK10L-TC-L

KNX Sensor / Controller Temperature
with Brightness Sensor

Operating temperature: -25 ... +80 °C

Measured brightness range: 3 ... 220.000 lux ± 20%

Measurement range PT1000: -50 ... +400 °C

IP54/65 Plastic housing (72 x 64 x 45) mm

Delivery without temperature sensor



Article

Article No.

SK10L-TC-L

30514100

SK10 without Temperature Probe

KNX Sensor / Controller Temperature

Operating temperature (module): -25 ... +80 °C

Measurement range PT1000: -50 ... +400 °C

IP54/65 Plastic housing (72 x 64 x 40) mm

Delivery without temperature sensor



Article

Article No.

SK10-TC

30510000

SK10 with Surface Contacting Probe



KNX Sensor / Controller Temperature
Surface-Contacting probe, square, for flat surfaces

The aluminium casing of the PT1000 temperature probe is attached to the surface with glue.

Operating temperature: -25 .. +80 °C
Measured temperature range: -30 .. +105 °C

Connecting cable: PVC 1.5 m
IP54/65 Plastic housing (72 x 64 x 40) mm

Article	Article No.
SK10-TC-OTF	30511001

SK10 with Sleeve Probe



KNX Sensor / Controller Temperature
Sleeve probe (PT1000) for temperature detection in liquid and gaseous media using an immersion sleeve.

Probe: Stainless steel, sleeve sensor, round, rolled stamped (protected from humidity)
50 mm, Ø 6 mm.

IP54/65 Plastic housing (72 x 64 x 40) mm

Article	Article description	Article No.
SK10-TC-HTF PVC 1,5 m	Operating temperature: -25 .. +80 °C Measured temperature range: -35 .. +105 °C Connecting cable: PVC 1.5 m	30511002
SK10-TC-HTF Silicone 1,5 m	Operating temperature: -25 .. +80 °C Measured temperature range: -50 .. +180 °C Connecting cable: Silicone 1.5 m	30511003
SK10-TC-HTF PTFE 1,5 m	Operating temperature: -25 .. +80 °C Measured temperature range: -50 .. +250 °C Connecting Cable IP68: PTFE 1.5 m	30511055

SK10-TC with TPE Temperature Probe



waterproof, salt water resistant

PT 1000

Measured temperature range: -40 .. 105 °C
Connecting cable: 2 m

IP68 (Probe) / IP65 Plastic housing (72 x 64 x 40) mm

Article	Article No.
SK10-TC-GTF-TPE	30511057



SK10 with Pipe-mounted Probe

KNX Sensor / Controller Temperature
with axial probe tube

Used for temperature detection of liquid and gaseous media on pipes and tubes.

Installation on pipe with endless strap and metal tightener.

Strap dimensions: Ø 13-92 mm (1/4 - 3"), 300 mm (included in delivery)

IP54/65 Plastic housing (72 x 64 x 40) mm

Article	Article description	Article No.
SK10-TC-ALTF1 PVC 1.5 m	Operating temperature: -25 ... +80 °C Measured temperature range: -35 ... +105 °C	30511004
SK10-TC-ALTF1 Silicone 1.5 m	Operating temperature: -25 ... +80 °C Measured temperature range: -35 ... +180 °C	30511005



SK10 with Pipe-mounted Probe

KNX Sensor / Controller Temperature
with contacting probe (PT1000) on the rear side of the terminal box

Used for temperature detection of liquids and gaseous media in pipes and tubes.

Installation on tubes with endless strap and metal tightener (included).

Strap dimensions: Ø 13 - 92 mm (1/4 - 3"), 300 mm

Operating temperature: -25 ... +80 °C

Measured temperature range: -30 ... +110 °C

IP54/65 Plastic housing (72 x 64 x 40) mm

Article	Article No.
SK10-TC-ALTF2	30511006



SK10 with External Probe

KNX Sensor / Controller Temperature

The PT1000 probe is enclosed in a V4A stainless steel sheath tube (60 mm, Ø 6 mm).

Operating temperature: -25 .. +80 °C
Measured temperature range: -30 .. +90 °C

IP54/65 Plastic housing (72 x 64 x 40) mm

Article	Article No.
SK10-TC-ATF2	30511007



SK10 with Screw-in Probe – Immersion Sleeve V4A with Cable Connection

KNX Sensor / Controller Temperature

The PT1000 probe is in a brass sheath tube (Ø 8 mm, max. pressure 40 bar) made of V4A steel with cable connection.

Used for temperature detection in liquid or gaseous media, in heating plants, circulation and climate technology.

IP54/65 Plastic housing (72 x 64 x 40) mm

Article	Article description	Article No.
SK10-TC-ESTF 50 mm PVC 1,5 m	Operating temperature: -25 .. +80 °C Measured temperature range: -35 .. +105 °C Probe: G 1/2", 50 mm	30511008
SK10-TC-ESTF 100 mm PVC 1,5 m	Operating temperature: -25 .. +80 °C Measured temperature range: -35 .. +105 °C Probe: G 1/2", 100 mm	30511009
SK10-TC-ESTF 50 mm Silicone 1,5 m	Operating temperature: -25 .. +80 °C Measured temperature range: -50 .. +180 °C Probe: G 1/2", 50 mm	30511010
SK10-TC-ESTF 100 mm Silicone 1,5 m	Operating temperature: -25 .. +80 °C Measured temperature range: -50 .. +180 °C Probe: G 1/2", 100 mm	30511011

SK10 with Screw-in Probe – Immersion Sleeve V4A

KNX Sensor / Controller Temperature

The PT1000 probe is in a stainless steel tube (G 1/2", Ø 6 mm), which is inside a V4A immersion sleeve (Ø 8 mm, max. pressure 40 bar).

Used for temperature detection in liquid or gaseous media, in heating plants, circulation and climate technology.

IP54/65 Plastic housing (72 x 64 x 40) mm



Article	Article description	Article No.
SK10-TC-ETF2 50mm	Operating temperature: -25 .. +80 °C Measured temperature range: -30 .. +150 °C	30511020
SK10-TC-ETF2 100mm	Operating temperature: -25 .. +80 °C Measured temperature range: -30 .. +150 °C	30511021
SK10-TC-ETF2 150mm	Operating temperature: -25 .. +80 °C Measured temperature range: -30 .. +150 °C	30511022
SK10-TC-ETF2 200mm	Operating temperature: -25 .. +80 °C Measured temperature range: -30 .. +150 °C	30511023
SK10-TC-ETF2 250mm	Operating temperature: -25 .. +80 °C Measured temperature range: -30 .. +150 °C	30511024
SK10-TC-ETF2 300mm	Operating temperature: -25 .. +80 °C Measured temperature range: -30 .. +150 °C	30511025
SK10-TC-ETF2 400mm	Operating temperature: -25 .. +80 °C Measured temperature range: -30 .. +150 °C	30511026



SK10 with Screw-in Probe – Immersion Sleeve with extended Shaft V4A

KNX Sensor / Controller Temperature

The PT1000 probe is in a V4A steel sheath tube (G 1/2", Ø 6mm), which is inside a V4A stainless steel immersion sleeve (Ø 8mm, max. pressure 40 bar).

Installed in pipes and cases with the immersion sleeve (included).

IP54/65 Plastic housing (72 x 64 x 40) mm

Article	Article description	Article No.
SK10-TC-ETF3 50mm	Operating temperature: -25 .. +80 °C Measured temperature range: -30 .. 150 °C	30511027
SK10-TC-ETF3 100mm	Operating temperature: -25 .. +80 °C Measured temperature range: -30 .. +150 °C	30511028
SK10-TC-ETF3 250mm	Operating temperature: -25 .. +80 °C Measured temperature range: -30 .. +150 °C	30511031



SK10 with Screw-in Probe, extended Shaft and Neck Tube for quick Response Time

KNX Sensor / Controller Temperature

Temperature probe (PT1000) with neck tube and plain tapered sheath tube, very quick response time, especially suitable for very swift temperature and control processes such as hot water systems.

Pipe length: 25mm
Pipe measurements: Ø 6 mm, plain tapered Ø 4mm
Protective material: stainless steel

IP54/65 Plastic housing (72 x 64 x 40) mm

Article	Article description	Article No.
SK10-TC-ETF7 100mm	Operating temperature: -25 .. +80 °C Measured temperature range: -30 .. +150 °C Probe: G 1/2", 100 mm	30511034
SK10-TC-ETF7 150mm	Operating temperature: -25 .. +80 °C Measured temperature range: -30 .. +150 °C Probe: G 1/2", 150 mm	30511035
SK10-TC-ETF7 250mm	Operating temperature: -25 .. +80 °C Measured temperature range: -30 .. +150 °C Probe: G 1/2", 250 mm	30511036

SK10 with Duct Probe incl. Mounting Flange

KNX Sensor / Controller Temperature

The PT1000 probe is in a V4A stainless steel sheath tube (Ø 6 mm).

Used in air ducts and heating and climate technology.

The boxes are mounted onto air ducts with a plastic sleeve and 2 screws.

Operating temperature: -25 .. + 80 °C

IP54/65 Plastic housing (72 x 64 x 40) mm



Article	Article description	Article No.
SK10-TC-KTFl 50mm	Measured temperature range: -30 .. +150 °C Probe: 50 mm	30511037
SK10-TC-KTFl 100mm	Measured temperature range: -30 .. +150 °C Probe: 100 mm	30511038
SK10-TC-KTFl 150mm	Measured temperature range: -30 .. +150 °C Probe: 150 mm	30511039
SK10-TC-KTFl 200mm	Measured temperature range: -30 .. +150 °C Probe: 200 mm	30511040
SK10-TC-KTFl 250mm	Measured temperature range: -30 .. +150 °C Probe: 250 mm	30511041
SK10-TC-KTFl 300mm	Measured temperature range: -30 .. +150 °C Probe: 300 mm	30511042
SK10-TC-KTFl 400mm	Measured temperature range: -30 .. +150 °C Probe: 400 mm	30511043



SK10 with Room Pendulum Probe

KNX Sensor / Controller Temperature

The temperature probe PT1000 is in a sheath tube.

Especially suited for large rooms and high ceilings. The sensor is suspended from the ceiling.

Probe: 90 mm
Operating temperature: -25 .. +80 °C
Measured temperature range: -5 .. +60 °C
Connecting cable: PVC 2 m

IP54/65 Plastic housing (72 x 64 x 40) mm

Article	Article No.
SK10-TC-RPTF1	30511050

SK10 with Dark Radiation Probe

KNX Sensor / Controller Temperature

The temperature probe PT1000 is in a black plastic sphere (Ø 50 mm)

The dark radiation probe detects radiation and radiation heat.

Especially suited for large rooms and high ceilings. The sensor is suspended from the ceiling.

Operating temperature: -25 .. +80 °C
Measured temperature range: -5 .. +60 °C
Connecting cable: PVC 2 m

IP54/65 Plastic housing (72 x 64 x 40) mm

Article	Article No.
SK10-TC-RPTF2	30511051

SK10 with Dark Radiation Probe

KNX Sensor / Controller Temperature

The KNX-Sensor SK10-TC-RSTF is used for measuring and controlling indoor air temperature. Air temperature (dark radiation sensor) also weighted with external temperature.

Operating temperature: -5 .. +60 °C
Measured temperature range: -5 .. +60 °C

IP54/65 Plastic housing (72 x 64 x 40) mm

Article	Article No.
SK10-TC-RSTF	30516061

KNX Sensor Systems for HVAC Applications - Application HLK 305

THC - Temperature / Humidity / RTR

+ additional Functions + CO₂ / VOC

THC

KNX Sensor Systems for HVAC Applications - Application HLK 305

THC - Temperature / Humidity / RTR
+ additional Functions + CO2 / VOC

arcus-eds

Content
☰

C
HLK
305

THC

AQS	Aluminum, square, sanded
AQB	Aluminum, square, sanded, black



Neo-THC-x

KNX Sensor / Controller Temperature Humidity
Binary Inputs+ Additional Functions

Operating temperature: -25 .. + 80 °C
Measured temperature range: -25 .. + 80 °C
Measured humidity range: 0 .. 100% r.H

IP20 Aluminum housing 80 x 80 cm
for (60/68 mm) flush-mounted socket

Article	Article No.
Neo-THC-AQS	30531583
Neo-THC-AQB	30531584

Neo-THC-CO2-x

KNX Sensor / Controller Temperature Humidity
CO2 Concentration
Binary Inputs+ Additional Functions

Operating temperature: -10 .. + 50 °C
Measured temperature range: -10 .. + 50 °C
Measured humidity range: 0 .. 95% r.H
Measured CO2 range: 400 - 5000 ppm

IP20 Aluminum housing 80 x 80 cm
for (60/68 mm) flush-mounted socket



Article	Article No.
Neo-THC-CO2-AQS	30532563
Neo-THC-CO2-AQB	30532564

Neo-THC-VOC-x

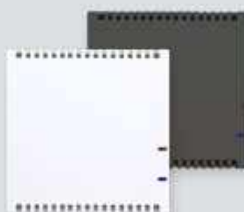
KNX Sensor / Controller Temperature Humidity
VOC Concentration
Binary Inputs+ Additional Functions

Operating temperature: -25 .. + 80 °C
Measured temperature range: -25 .. + 80 °C
Measured humidity range: 10 .. 95% r.H
Measured VOC range: 400 - 10 000 ppm CO2 Equivalent

IP20 Aluminum housing 80 x 80 cm
for (60/68 mm) flush-mounted socket



Article	Article No.
Neo-THC-VOC-AQS	30533563
Neo-THC-VOC-AQB	30533564



SK30-THC

KNX Sensor / Controller Temperature Humidity
Binary Inputs + Additional Functions

Operating temperature: -25 ... +80 °C
Measured temperature range: -25 ... +80 °C
Measured humidity range: 0 ... 100% r.H

IP20 Plastic housing in 55mm standard size

Article

SK30-THC white
SK30-THC ultra dark grey

Article No.

30531361
30531362



SK30-THC-PB

KNX Sensor / Controller Temperature Humidity
Push Buttons
Binary Inputs + Additional Functions

Operating temperature: -25 ... +80 °C
Measured temperature range: -25 ... +80 °C
Measured humidity range: 0 ... 100% r.H

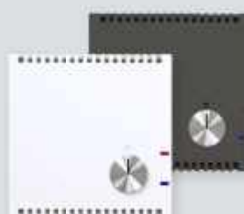
IP20 Plastic housing in 55mm standard size

Article

SK30-THC-PB white
SK30-THC-PB ultra dark grey

Article No.

30531371
30531372



SK30-THC-R

KNX Sensor / Controller Temperature Humidity
Rotary Controller
Binary Inputs + Additional Functions

Operating temperature: -25 ... +80 °C
Measured temperature range: -25 ... +80 °C
Measured humidity range: 0 ... 100% r.H

IP20 Plastic housing in 55mm standard size

Article

SK30-THC-R white
SK30-THC-R ultra dark grey

Article No.

30531351
30531352

KNX Sensor Systems for HVAC Applications - Application HLK 305

THC - Temperature / Humidity / RTR
+ additional Functions + CO2 / VOC

arcus-eds

Content
☰

C
HLK
305

THC

SK30-THC-CO2



KNX Sensor / Controller Temperature Humidity
CO2 Concentration
Binary Inputs + Additional Functions

Operating temperature: -10 .. +50 °C
Measured temperature range: -10 .. +50 °C
Measured humidity range: 0 .. 95% r.H
Measured CO2 range: 400 - 5000 ppm

IP20 Plastic housing in 55mm standard size

Article	Article No.
SK30-THC-CO2 white	30532361
SK30-THC-CO2 ultra dark grey	30532362

SK30-THC-CO2-PB



KNX Sensor / Controller Temperature Humidity
CO2 Concentration, Push Button
Binary Inputs + Additional Functions

Operating temperature: -10 .. +50 °C
Measured temperature range: -10 .. +50 °C
Measured humidity range: 0 .. 95% r.H
Measured CO2 range: 400 - 5000 ppm

IP20 Plastic housing in 55mm standard size

Article	Article No.
SK30-THC-CO2-PB white	30532371
SK30-THC-CO2-PB ultra dark grey	30532372

SK30-THC-CO2-R



KNX Sensor / Controller Temperature Humidity
CO2 Concentration, Rotary Controller
Binary Inputs + Additional Functions

Operating temperature: -10 .. +50 °C
Measured temperature range: -10 .. +50 °C
Measured humidity range: 0 .. 95% r.H
Measured CO2 range: 400 - 5000 ppm

IP20 Plastic housing in 55mm standard size

Article	Article No.
SK30-THC-CO2-R white	30532351
SK30-THC-CO2-R ultra dark grey	30532352



SK30-THC-VOC

KNX Sensor / Controller Temperature Humidity
VOC Concentration

Binary Inputs + Additional Functions

Operating temperature: -25 .. +80 °C
Measured temperature range: -25 .. +80 °C
Measured humidity range: 10 .. 95% r.H.
Measured VOC range: 400 - 10 000 ppm CO2 equivalent

IP20 Plastic housing in 55mm standard size

Article

Article No.

SK30-THC-VOC white

30533361

SK30-THC-VOC ultra dark grey

30533362



SK30-THC-VOC-PB

KNX Sensor / Controller Temperature Humidity
VOC Concentration, Push Button

Binary Inputs + Additional Functions

Operating temperature: -25 .. +80 °C
Measured temperature range: -25 .. +80 °C
Measured humidity range: 10 .. 95% r.H.
Measured VOC range: 400 - 10 000 ppm CO2 equivalent

IP20 Plastic housing in 55mm standard size

Article

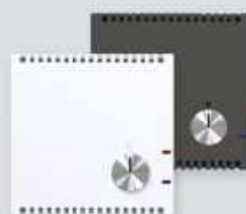
Article No.

SK30-THC-VOC-PB white

30533371

SK30-THC-VOC-PB ultra dark grey

30533372



SK30-THC-VOC-R

KNX Sensor / Controller Temperature Humidity
VOC Concentration, Rotary Controller

Binary Inputs + Additional Functions

Operating temperature: -25 .. +80 °C
Measured temperature range: -25 .. +80 °C
Measured humidity range: 10 .. 95% r.H.
Measured VOC range: 400 - 10 000 ppm CO2 equivalent

IP20 Plastic housing in 55mm standard size

Article

Article No.

SK30-THC-VOC-R white

30533351

SK30-THC-VOC-R ultra dark grey

30533352

KNX Sensor Systems for HVAC Applications - Application HLK 305

THC - Temperature / Humidity / RTR
+ additional Functions + CO2 / VOC

arcus-eds



SK20-THC-2B

KNX Sensor / Controller Temperature Humidity
Binary Inputs

Operating temperature: -20 .. + 80 °C
Measured temperature range: -20 .. + 80 °C
Measured humidity range: 0 .. 100% r.H

IP20 Plastic housing (71 x 71 x 25) mm

Article	Article No.
SK20-THC-2B	30531261



SK20-THC-CO2-2B

KNX Sensor / Controller Temperature
CO2 Concentration
Binary Inputs

Operating temperature: -10 .. + 50 °C
Measured temperature range: -10 .. + 50 °C
Measured humidity range: 0 .. 95% r.H
Measured CO2 range: 400 - 5000 ppm

IP20 Plastic housing (71 x 71 x 25) mm

Article	Article No.
SK20-THC-CO2-2B	30532261



SK20-THC-VOC-2B

KNX Sensor / Controller Temperature
VOC Concentration
Binary Inputs

Operating temperature: -25 .. + 80 °C
Measured temperature range: -25 .. + 80 °C
Measured humidity range: 10 .. 95% r.H
Measured VOC range: 400 - 10 000 ppm CO2 Equivalent

IP20 Plastic housing (71 x 71 x 25) mm

Article	Article No.
SK20-THC-VOC-2B	30533261

Content
☰

C
HLK
305

THC



SK07-THC-4B

KNX Sensor / Controller Temperature Humidity

Connection for Temp. / Humidity Sensor (HTU21)

4 button inputs

Two switch inputs can be configured as outputs at 3VDC(1mA)

Operating temperature (module): -25 .. +80 °C

Measurement range HTU21 Temperature: -25 .. +80 °C

Measurement range HTU21 Humidity: 0 .. 100% r.H

IP20 Plastic housing (50 x 50 x 20) mm

Delivery without temperature/humidity sensor

Article

SK07-THC-4B

Article No.

30530780



Temperature humidity probe, assembled for SK07

Measured temperature range: -25 .. +80 °C

Measured humidity range: 0 .. 100% r.H.

Connecting cable: PVC 9 cm

Article

HTU21-SK07

Article No.

99121071



SK1-THC-AFF

KNX Sensor / Controller

Temperature / Humidity / Climate

The probe is protected from dust by a poroplast protective coating.

Application: building automation, refrigeration, air conditioning and ventilation systems, clean rooms, greenhouses, etc.

Probe Length: 45 mm

Operating temperature: -25 .. +80 °C

Measured temperature range: -25 .. +80 °C

Measured humidity range: 0 .. 100% r.H

IP54/65 Plastic housing (72 x 64 x 40) mm

Article

SK10-THC-AFF

SK10-THC-AFF-MMF

Article No.

30531053

30531058

KNX Sensor Systems for HVAC Applications - Application HLK 305

THC - Temperature / Humidity / RTR
+ additional Functions + CO2 / VOC

arcus-eds

Content
☰

C
HLK
305

THC

SK10L-THC-L-AFF



KNX Sensor / Controller
Temperature / Humidity / Climate
with Brightness Sensor

The probe is protected from dust by a poroplast plastic coating.

Probe Length: 45 mm
Operating temperature: -25 .. + 80 °C
Measured temperature range: -25 .. + 80 °C
Measured humidity range: 0 .. 100% r.H
Measured brightness range: 3 .. 220.000 lux ± 20%

IP54/65 Plastic housing (72 x 64 x 45) mm

Article	Article No.
SK10L-THC-L-AFF	30534153

SK10-THC-CO2-AFF



KNX Sensor / Controller Temperature Humidity
CO2 Concentration

Probe Length: 45 mm
Operating temperature: -10 .. + 50 °C
Measured temperature range: -10 .. + 50 °C
Measured humidity range: 0 .. 95% r.H
Measured CO2 range: 400 - 5000 ppm

IP54/65 Plastic housing (72 x 64 x 40) mm

Article	Article No.
SK10-THC-CO2-AFF	30532053

SK10-THC-VOC-AFF



KNX Sensor / Controller Temperature Humidity
VOC Concentration

Probe Length: 45 mm
Operating temperature: -25 .. + 80 °C
Measured temperature range: -25 .. + 80 °C
Measured humidity range: 10 .. 95% r.H
Measured VOC range: 400 - 10 000 ppm CO2 equivalent

IP54/65 Plastic housing (72 x 64 x 40) mm

Article	Article No.
SK10-THC-VOC-AFF	30533053



SK10-THC-ALKF1

KNX Sensor / Controller
Temperature / Humidity / Climate

Condensation monitor with remote sensor head and connecting cable

Cable length: 1.5m
Operating temperature: -25 .. +80 °C
Measured temperature range: -25 .. +80 °C
Measured humidity range: 0 .. 100% r.H

IP54/65 Plastic housing (72 x 64 x 40) mm

Article

SK10-THC-ALKF1

Article No.

30531161



SK10-THC-ALKF2

KNX Sensor / Controller
Temperature / Humidity / Climate

Condensation monitor with tensioning strap for direct pipe mounting.
Contacting probe (PT1000) on the rear side of the terminal box

Operating temperature: -25 .. +80 °C
Measured temperature range: -25 .. +80 °C
Measured humidity range: 0 .. 100% r.H

IP54/65 Plastic housing (72 x 64 x 40) mm

Article

SK10-THC-ALKF2

Article No.

30531162



SK10 with Duct Probe

KNX Sensor / Controller
Temperature / Humidity / Climate

The probe is protected from dust by a poroplast protective coating.

Application: detection of temperature in air ducts, local regulation in heating systems for constant KNX valves or electrothermal valves, local air regulation.

Installation: The boxes are fixed to the air duct with a plastic sleeve and two screws.

Probe length: 230 mm
Operating temperature: -25 .. + 80 °C
Measured temperature range: -25 .. + 80 °C
Measured humidity range: 0 .. 100% r.H

IP54/65 Plastic housing (72 x 64 x 40) mm

Article	Article No.
SK10-THC-KFF	30531057



SK10 with CO2 Duct Probe

KNX Sensor / Controller Temperature Humidity
CO2 Concentration

Probe length: 230 mm
Operating temperature: -10 .. + 50 °C
Measured temperature range: -10 .. + 50 °C
Measured humidity range: 0 .. 95% r.H
Measured CO2 range: 400 - 5000 ppm

IP54/65 Plastic housing (72 x 64 x 40) mm

Article	Article No.
SK10-THC-CO2-KF	30532001



SK10 with VOC Duct Probe

KNX Sensor / Controller Temperature Humidity
VOC Concentration

Probe length: 230 mm
Operating temperature: -25 .. + 80 °C
Measured temperature range: -25 .. + 80 °C
Measured humidity range: 10 .. 95% r.H
Measured VOC range: 400 - 10 000 ppm CO2 equivalent

IP54/65 Plastic housing (72 x 64 x 40) mm

Article	Article No.
SK10-THC-VOC-KF	30533001



SK10-THC with Room Pendulum Probe

KNX Sensor / Controller
Temperature / Humidity / Climate

Application: building automation, refrigeration, air conditioning and clean room technology, greenhouses, halls with high ceilings.

For installation in high rooms the sensor is suspended from the ceiling.

The probe is protected from dust by a poroplast protective coating and is used as a pendulum room sensor.

Probe: 90 mm
Connecting cable: PVC 2 m
Operating temperature: -25 ... +80 °C
Measured temperature range: -25 ... +80 °C
Measured humidity range: 0 ... 100% r.H.

IP54/65 Plastic housing (72 x 64 x 40) mm

Article

SK10-THC-RPFF

Article No.

30531054



SK10-THC with Room Pendulum Probe (Metal Membrane Filter)

KNX Sensor / Controller
Temperature / Humidity / Climate

Application: building automation, refrigeration, air conditioning and clean room technology, greenhouses, halls with high ceilings.

For the installation in high rooms the sensor is suspended from the ceiling.

The probe is protected from condensation and dust by a hydrogas metal membrane filter and is used as a pendulum room sensor.

Probe: 90 mm
Connecting cable: PVC 2m
Operating temperature: -25 ... +80 °C
Measured temperature range: -25 ... +80 °C
Measured humidity range: 0 ... 100% r.H.

IP54/65 Plastic housing (72 x 64 x 40) mm

Article

SK10-THC-RPFF-MMF

Article No.

30531056

SK10-THC with CO2 Room Pendulum Probe

KNX Sensor / Controller
Temperature / Humidity / Climate
CO2 Concentration



Application: building automation, refrigeration, air conditioning and clean room technology, greenhouses, halls with high ceilings.

For installation in high rooms the sensor is suspended from the ceiling.

The probe is protected from dust by a poroplast protective coating and is used as a pendulum room sensor.

Probe: 120 mm
Connecting cable: PVC 2 m
Operating temperature: -10 .. +60 °C
Measured temperature range: -25 .. +80 °C
Measured humidity range: 0 .. 100% r.H
Measured CO2 range: 0 .. 40000 ppm

IP54/65 Plastic housing (72 x 64 x 40) mm

Article	Article No.
SK10-THC-CO2-RPFF	30532064

SK10-THC with CO2 Room Pendulum Probe (Metal Membrane Filter)

KNX Sensor / Controller
Temperature / Humidity / Climate
CO2 Concentration



Application: building automation, refrigeration, air conditioning and clean room technology, greenhouses, halls with high ceilings.

For the installation in high rooms the sensor is suspended from the ceiling.

The probe is protected from condensation and dust by a hydrogas metal membrane filter and is used as a pendulum room sensor.

Probe: 120 mm
Connecting cable: PVC 2m
Operating temperature: -10 .. +60 °C
Measured temperature range: -25 .. +80 °C
Measured humidity range: 0 .. 100% r.H
Measured CO2 range: 0 .. 40000 ppm

IP54/65 Plastic housing (72 x 64 x 40) mm

Article	Article No.
SK10-THC-CO2-RPFF-MMF	30532066



KNX Sensor Systems for HVAC Applications - Application HLK 305

TTHC - Temperature / Temperature / Humidity / RTR

+ additional Functions + CO₂ / VOC

TTHC

KNX Sensor Systems for HVAC Applications - Application HLK 305

TTHC - Temperature / Temperature / Humidity / RTR
+ additional Functions + CO2 / VOC

arcus-eds

AQS	Aluminum, square, sanded
AQB	Aluminum, square, sanded, black



Neo-TTHC-x

KNX Sensor / Controller Temperature Humidity
ext. Temperature (PT1000)
Binary Inputs + Additional Functions

Operating temperature: -25 .. +80 °C
Measured temperature range: -25 .. +80 °C
Measured humidity range: 0 .. 100% r.H
Measured range ext. PT1000: -50 .. +400 °C

IP20 Aluminum housing (80 x 80 cm) for flush-mounted socket (60/68 mm)

Article	Article No.
Neo-TTHC-AQS	30541583
Neo-TTHC-AQB	30541584

Neo-TTHC-CO2-x

KNX Sensor / Controller Temperature Humidity
CO2 Concentration
ext. Temperature (PT1000), Push Buttons
Binary Inputs + Additional Functions

Operating temperature: -10 .. +50 °C
Measured temperature range: -10 .. +50 °C
Measured humidity range: 0 .. 95% r.H
Measured range ext. PT1000: -50 .. +400 °C (depending on the sensor)
Measured CO2 range: 400 - 5000 ppm

IP20 Aluminum housing for (60/68 mm) flush-mounted socket

Article	Article No.
Neo-TTHC-CO2-AQS	30542563
Neo-TTHC-CO2-AQB	30542564



Neo-TTHC-VOC-x

KNX Sensor / Controller Temperature Humidity
VOC Concentration
ext. Temperature (PT1000)
Binary Inputs + Additional Functions

Operating temperature: 25 .. +80 °C
Measured temperature range: 25 .. +80 °C
Measured humidity range: 10 .. 95% r.H
Measured range ext. PT1000: -50 .. +400 °C
Measured VOC range: 400 - 10 000 ppm CO2 Equivalent

IP20 Aluminum housing for (60/68 mm) flush-mounted socket

Article	Article No.
Neo-TTHC-VOC-AQS	30543563
Neo-TTHC-VOC-AQB	30543564



SK30-TTHC

KNX Sensor / Controller Temperature Humidity
ext. Temperature (PT1000)
Binary Inputs + Additional Functions

Operating temperature: -25 ... +80 °C
Measured temperature range: -25 ... +80 °C
Measured humidity range: 0 ... 100% r.H.
Measured range ext. PT1000: -50 ... +400 °C

IP20 Plastic housing in 55mm standard size

Article	Article No.
SK30-TTHC white	30541361
SK30-TTHC ultra dark grey	30541362



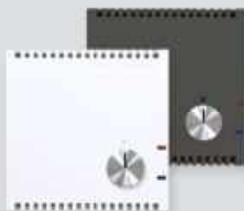
SK30-TTHC-PB

KNX Sensor / Controller Temperature Humidity
ext. Temperatur (PT1000), Push Buttons
Binary Inputs + Additional Functions

Operating temperature: -25 ... +80 °C
Measured temperature range: -25 ... +80 °C
Measured humidity range: 0 ... 100% r.H.
Measured range ext. PT1000: -50 ... +400 °C

IP20 Plastic housing in 55mm standard size

Article	Article No.
SK30-TTHC-PB white	30541371
SK30-TTHC-PB ultra dark grey	30541372



SK30-TTHC-R

KNX Sensor / Controller Temperature Humidity
ext. Temperatur (PT1000), Rotary Controller
Binary Inputs + Additional Functions

Operating temperature: -25 ... +80 °C
Measured temperature range: -25 ... +80 °C
Measured humidity range: 0 ... 100% r.H.
Measured range ext. PT1000: -50 ... +400 °C

IP20 Plastic housing in 55mm standard size

Article	Article No.
SK30-TTHC-R white	30541351
SK30-TTHC-R ultra dark grey	30541352

KNX Sensor Systems for HVAC Applications - Application HLK 305

TTHC - Temperature / Temperature / Humidity / RTR
+ additional Functions + CO2 / VOC

arcus-eds



SK30-TTHC-CO2

KNX Sensor / Controller Temperature Humidity
CO2 Concentration
ext. Temperature (PT1000)
Binary Inputs + Additional Functions
Operating temperature: -10 .. + 50 °C
Measured temperature range: -10 .. + 50 °C
Measured humidity range: 0 .. 95% r.H
Measured range ext. PT1000: -50 .. + 400 °C
Measured CO2 range: 400 - 5000 ppm
IP20 Plastic housing in 55mm standard size

Article	Article No.
SK30-TTHC-CO2 white	30542361
SK30-TTHC-CO2 ultra dark grey	30542362



SK30-TTHC-VOC

KNX Sensor / Controller Temperature Humidity
VOC Concentration
ext. Temperatur (PT1000)
Binary Inputs + Additional Functions
Operating temperature: -25 .. + 80 °C
Measured temperature range: -25 .. + 80 °C
Measured humidity range: 10 .. 95% r.H
Measured Temp. range ext. PT1000: -50 .. + 400 °C
Measured VOC range: 400 - 10 000 ppm CO2 equivalent
IP20 Plastic housing in 55mm standard size

Article	Article No.
SK30-TTHC-VOC white	30543361
SK30-TTHC-VOC ultra dark grey	30543362



An additional PT1000 probe for surface mounting, screwing in or contacting can be ordered.

(See section Z, Components / Replacement Parts)

KNX Sensor Systems for HVAC Applications - Application HLK 305

TTHC - Temperature / Temperature / Humidity / RTR

+ additional Functions + CO₂ / VOC

arcus-eds

Content



C

HLK
305

TTHC



SK20-TTHC-2B

KNX Sensor / Controller Temperature Humidity
ext. Temperature (PT1000)
Binary Inputs

Operating temperature: -25 .. +80 °C
Measured temperature range: -25 .. +80 °C
Measured humidity range: 0 .. 100% r.H.
Measured range ext. PT1000: -50 .. +400 °C

IP20 Plastic housing (71 x 71 x 25) mm

Article

SK20-TTHC-2B

Article No.

30541261



SK20-TTHC-CO₂-2B

KNX Sensor / Controller Temperature Humidity
ext. Temperature (PT1000)
CO₂ Concentration
Binary Inputs

Operating temperature: -10 .. +50 °C
Measured temperature range: -10 .. +50 °C
Measured humidity range: 0 .. 95% r.H.
Measured range ext. PT1000: -50 .. +400 °C
Measured CO₂ range: 300 - 5000 ppm

IP20 Plastic housing (71 x 71 x 25) mm

Article

SK20-TTHC-CO₂-2B

Article No.

30542261



SK20-TTHC-VOC-2B

KNX Sensor / Controller Temperature Humidity
ext. Temperature (PT1000)
VOC Concentration
Binary Inputs

Operating temperature: -25 .. +80 °C
Measured temperature range: -25 .. +80 °C
Measured humidity range: 10 .. 95% r.H.
Measured range ext. PT1000: -50 .. +400 °C
Measured VOC range: 400 - 10 000 ppm CO₂ equivalent

IP20 Plastic housing (71 x 71 x 25) mm

Article

SK20-TTHC-VOC-2B

Article No.

30543261



An additional PT1000 probe for surface mounting, screwing in or contacting can be ordered.

(See section Z, Components / Replacement Parts)

KNX Sensor Systems for HVAC Applications - Application HLK 305

TTHC - Temperature / Temperature / Humidity / RTR

+ additional Functions + CO2 / VOC

arcus-eds

Content
☰

C

HLK
305

TTHC



SK07-TTHC-4B

KNX Sensor / Controller Temperature Humidity
Connection for PT1000, Connection for Temp. / Humidity Sensor (HTU21)
4 button inputs, Two switch inputs can be configured as outputs at 3VDC(1mA)

Operating temperature (module): -25 .. +80 °C
Measured temperature range (HTU21): -25 .. +80 °C
Measured humidity range (HTU21): 0 .. 100% r.H
Measured range PT1000: -50 .. +400 °C

IP20 Plastic housing (50 x 50 x 20) mm
Delivery without temperature/humidity sensor

Article	Article No.
SK07-TTHC-4B	30540780



Temperature humidity probe, assembled for SK07

Measured temperature range: -25 .. +80 °C
Measured humidity range: 0 .. 100% r.H
Connecting cable: PVC 9 cm

Article	Article No.
HTU21-SK07	99121071

SK10L-TTHC-L-AFF

KNX Sensor / Controller
Temperature / Humidity / Climate
with Brightness Sensor ext. Temperature (PT1000)

The probe is protected from dust by a poroplast protective coating.

Probe: 45 mm
Operating temperature: -25 .. +80 °C
Measured temperature range: -25 .. +80 °C
Measured humidity range: 0 .. 100% r.H
Measured brightness range: 3 .. 220.000 lux ± 20 %
Measured range ext. PT1000: -50 .. +400 °C

IP54/65 Plastic housing (72 x 64 x 45) mm
An additional PT1000 probe is not included in delivery.

Article	Article No.
SK10L-TTHC-L-AFF	30544153



SK10-TTHC-AFF

KNX Sensor / Controller Temperature / Humidity
+ ext. Temperature (PT1000)

Application: building automation, refrigeration, air conditioning and ventilation technology, greenhouses etc.

The temperature / humidity probe is protected from dust by a poroplast protective coating.

Probe: 45 mm
Operating temperature: -25 .. +80 °C
Measured temperature range: -25 .. +80 °C
Measured humidity range: 0 .. 100% r.H
Measured range ext. PT1000: -50 .. +400 °C

IP54/65 Plastic housing (72 x 64 x 40) mm

An additional PT1000 probe is not included in delivery.

Article	Article No.
SK10-TTHC-AFF	30541053





SK10 with Room Pendulum Probe

KNX Sensor / Controller Temperature / Humidity
+ ext. Temperature (PT1000)

Application: building automation, refrigeration, air-conditioning and ventilation technology, greenhouses, in halls with high ceilings, etc.

For installation in high rooms the sensor is suspended from the ceiling.

The probe is protected from dust by a poroplast protective coating and is used as a pendulum room sensor.

Probe: 90 mm
Connecting cable: PVC 2m
Operating temperature: -25 ... +80°C
Measured temperature range: -25 ... +80°C
Measured humidity range: 0 ... 100% r.H.
Measured range ext. PT1000: -50 ... +400 °C

IP54/65 Plastic housing (72 x 64 x 40) mm

An additional PT1000 probe is not included in delivery.

Article

Article No.

SK10-TTHC-RPFF

30541054



SK10 with Room Pendulum Probe

KNX Sensor / Controller Temperature / Humidity
+ ext. Temperature (PT1000)

Application: building automation, refrigeration, airconditioning and clean room technology, greenhouses, halls with high ceilings.

For the installation in high rooms the sensor is suspended from the ceiling.

The probe is protected from condensation and dust by a hydrogas metal membrane filter and is used as a pendulum room sensor.

Probe: 90 mm
Connecting cable: PVC 2m
Operating temperature: -25 ... +80°C
Measured temperature range: -25 ... +80°C
Measured humidity range: 0 ... 100% r.H.
Measured range ext. PT1000: -50 ... +400 °C

IP54/65 Plastic housing (72 x 64 x 40) mm

An additional PT1000 probe is not included in delivery.

Article

Article No.

SK10-TTHC-RPFF
-MMF

30541056

SK10 with Duct Probe

KNX Sensor / Controller/ Temperature / Humidity / Climate
+ ext. Temperature (PT1000)



The probe is protected from dust by a poroplast protective coating.

Application: detection of temperature in air ducts, local regulation in heating systems for constant KNX valves or electrothermal valves, local air regulation.

Installation: The boxes are fixed to the air duct with a plastic sleeve and two screws.

Probe length: 230 mm
Operating temperature: -25 .. +80 °C
Measured temperature range: -25 .. +80 °C
Measured humidity range: 0 .. 100% r.H
Measured range ext. PT1000: -50 .. +400 °C

IP54/65 Plastic housing (72 x 64 x 40) mm

An additional PT1000 probe is not included in delivery.

Article

SK10-TTHC-KFF

Article No.

30541057



An additional PT1000 probe for surface mounting, screwing in or contacting can be ordered.

(See section Z, Components / Replacement Parts)

KNX Actuators



Ventilation



SK07-Lunos-Control4-IW



KNX-Lunos-Control4-REG

Heating



SK08-Ventil4

KNX Actuators

Ventilation

arcus-eds

The module **KNX LUNOS Control4-IW** enables control of decentralized ventilation units from the company Lunos (www.lunos.de) via the KNX bus.

- Ventilation units e² und e⁰ with heat recovery
- Ventilation units Silvento FK, Ra 15-60 und ACM-Modul as pure exhaust fans

Up to 4 ventilation devices are powered by a module.

Several modules can be networked together via the KNX bus to allow coordinated operation. The ventilation units can be directly controlled by the existing switch inputs.



SK07-Lunos-Control4-IW

The module enables the control of decentralized ventilation units with heat recovery from the company Lunos.

Operating temperature: -5 .. +45 °C
Additional voltage: 24 .. 32 VDC max. 18 W

IP20 Plastic housing (50 x 50 x 20) mm
For in-wall mounting in dry interiors, IP20

Article	Article No.
SK07-Lunos-Control4-IW	65001002



SK07-Lunos-Control4-REG

The module enables the control of decentralized ventilation units with heat recovery from the company Lunos.

Operating temperature: -5 .. +45 °C
Additional voltage: 24 .. 32 VDC max. 18 W

DIN Rail mounted housing 4 units width (70 x 90 x 63 mm)
IP20

Article	Article No.
KNX-Lunos-Control4-REG	65001004

KNX Actuators

Heating

On-wall KNX controller for heating actuators

The actuator control Arcus Ventil4 enables the control of up to 4 actuators or mixing valves in the heating system.

0 -12V linear actuator for valves or a 24V PWM for thermal control valves in heating circuit are available.

Additional supply of 24 .. 32 VDC necessary



SK08-Ventil4

Control of up to 4 actuators or mixing valves

Additional voltage: 24 .. 32 VDC
Plastic housing: (115 x 65 x 55) mm

On-wall mounting in dry indoor applications IP54/65

Article	Article No.
SK08-Ventil4	65102008

Physical and Chemical Measurement Technology ^E



8 x Temperature



SK08-T8

Global Radiation



SK08-GLB5-MES

Water Quality



SK08-WAQ



SK08-WAQ-MES

Soil Humidity



SK08-BFT-WMT



SK08-BFTLFT-AFF-WMT

Level Metering



SK80-F-PM-5



SK80-F-T-PM-5
SK80-F-T-PM-10



SK80-F-T-PMO-5
SK80-F-T-PMO-10



SK80-F-U-5

Voltage Metering



SK08-AN2

The **product series S8** provides a range of sensors and controllers of various physical and chemical measurements for indoor and outdoor applications.

Functions:

- Up to 8 measured values each with:
- Two position controller with switch and pulse 1-bit output or
 - PI controller with continuous 8-bit or pulse-width modulated 1-bit output
 - Adjustable periodic display of control variable: no periodic display / 10-250 seconds
 - Adjustable release and lock with all controllers
 - Threshold alarms for upper and lower thresholds
 - Auxiliary adjusting of set value or threshold via the bus
 - Calibration of the sensors (offset cancellation)

8 x Temperatur

SK08-T8



Controller 8-Channel Temperature for measurement and control of up to 8 temperatures.

Temperatures are measured with the external PT1000 temperature probes. A wide range of probes can be mixed in one installation.

Temperature probes (PT1000) are not included in delivery.

The SK08-T8 can also be ordered to connect PT100 or PT500 elements.

Operating temperature: -20 ... +80 °C

Housing: (115 x 65 x 55) mm

Installation: indoor / outdoor and damp room

	Article description	Article No.
SK08-T8	Operating temperature: -20 ... +80 °C	30801000
	Measured temperature range: PT1000 -50 ... +200 °C	
SK08-T8-PT100	Operating temperature: -20 ... +80 °C	30801100
	Measured temperature range: PT1000 -50 ... +200 °C	
SK08-T8-PT500	Operating temperature: -20 ... +80 °C	30801500
	Measured temperature range: PT1000 -50 ... +200 °C	



An additional PT1000 probe for surface mounting, screwing in or contacting with customised cable-length can be ordered.

(See section Z, Components / Replacement Parts)

Water Quality

SK08-WAQ / SK08-WAQ-MES

Galvanic isolated instrumentation amplifier and bus coupling unit for measurement and control of the water quality indicators pH and ORP with the optional connection for PT1000 temperature probe.

The age of the electrodes depends on many factors, so the exact expectancy can not be estimated.

Standard values:

- Operation in room temperature: 1-3 years
- Operation in 60-80 °C: several months
- Operation in 80-100 °C: several weeks

Measuring Electrode Units (see section Z, Components / Replacement Parts)

For monitoring and control of the water quality in aquariums, swimming pools, ponds and service water systems.

Operating temperature: 0 ... +80 °C

Plastic housing: (115 x 65 x 55) mm

For indoor / outdoor and damp room IP54/65



Article	Article description	Article No.
SK08-WAQ	KNX Sensor / controller for water quality without Measuring Electrode Units	30802000
	Operating temperature: 0 ... +80 °C Plastic housing: (115 x 65 x 55) mm	
SK08-WAQ-MES	KNX Sensor / controller for water quality with Measuring Electrode Units included	30802001
	Operating temperature: 0 ... +80 °C Plastic housing: (115 x 65 x 55) mm	
Probes for SK08-WAQ	WAQ Probe Set single-rod measuring cells	91110020

Global Radiation

**SK08-GLBS-MES**

KNX - Global radiation sensor
silicone pyranometer
pyranometer and bus module included

Range: 0 ... 1800 W/m²
Accuracy: 5 %
Spectral range: 400 ... 1100 nm
Temperature range: -40 ... +65 °C

Drift: typical 2% p.a.
With bubble level for exact leveling

For indoor / outdoor and damp room IP54/65

Article

SK08-GLBS-MES

Article No.

30804001

Soil Moisture

**SK08-BFT-WMT**

KNX sensor / controller for monitoring and control of soil moisture and soil temperature.
(PT1000) with Watermark® -WM (maintenance free) soil moisture probe.

Operating temperature: -25 ... +80 °C
Measured Temp. Range: -25 ... +80 °C

Connection cable Watermark® -WM:
Standard: 5 m
Other cable lengths on request.

Plastic housing: (115 x 65 x 55) mm

Article

SK08-BFT-WMT
incl. Watermark® soil moisture probe

Article No.

30805001

**SK08-BFTLFT-AFF-WMT**

KNX sensor / controller for monitoring and control of soil moisture and soil temperature.
(PT1000) with Watermark® -WM (maintenance free) soil moisture probe
and air temperature and humidity sensor.

Operating temperature: -25 ... +80 °C
Measured Temp. Range (Soil): -25 ... +80 °C
Measured Temp. Range (Air): -25 ... +80 °C
Measured Humidity Range: 0 ... 95% r.H

Connection Cable Watermark® -WM:
Standard: 5 m
Other cable lengths on request.

Plastic housing: (115 x 65 x 55) mm
For indoor / outdoor and damp room IP54/65

Article

SK08-BFTLFT-AFF-WMT
incl. Watermark® soil moisture probe

Article No.

30805021

Füllstand | Hydrostatisch



The KNX level measuring system SK80-F measures and regulates the filling and water levels from water cisterns or oil tanks of different shapes and with KNX connection.

The measuring system includes a hydrostatic sensor and the KNX coupler with integrated display.

Housing SK80 (120 x 90 x 50 mm)
Indoor and damp room IP54/65

Article	Article description	Article No.
SK80-F	without Sensor	30807000

SK80-F-PM for Water

Article	Article description	Article No.
SK80-F-PM-5	Maximum Fill Level: 5 m Cable length: 10 m	30807205
SK80-F-T-PM-5	with Temperature Sensor Maximum Fill Level: 5 m Cable length: 10 m	30807305
SK80-F-T-PM-10	with Temperature Sensor Maximum Fill Level: 10 m Cable length: 15 m	30807310

SK80-F-PMO for Heating Oil

Article	Article description	Article No.
SK80-F-T-PMO-5	with Temperature Sensor Maximum Fill Level: 5 m Cable length: 10 m	30807370
SK80-F-T-PMO-10	with Temperature Sensor Maximum Fill Level: 10 m Cable length: 15 m	30807380

Füllstand | Ultraschall

SK80-F-U



The KNX level measuring system SK80-F measures and regulates the filling and water levels from water cisterns or oil tanks of different shapes and with KNX connection.

The measuring system includes an ultrasonic sensor and the KNX coupler with integrated display.

Housing SK80 (120 x 90 x 50 mm)
Outdoors and damp room IP54/65

Article	Article description	Article No.
SK80-F-U-5	Maximum Fill Level: 5 m Cable length: 10 m	30807105

Spannungsmessung

Voltage Metering SK08-AN2



KNX Dataconverter / controller for monitoring and control of two analog voltages.
Input range 0 ... 10 VDC.

Factory setting: 0 ... 10 VDC

Plastic housing: (115 x 65 x 55) mm
For indoor / outdoor and damp room IP54/65

Article	Article No.
SK08-AN2	30806202

KNX Components for Building Automation

arcus-eds

Content



KNX Gateways

F

KNX Gateways

DMX / RS232 / RS485 / MBUS / MODBUS / HAN

arcus-eds

Content
☰

Gateway 2 DMX / RS232 / RS485



KNX-GW2-DMX



KNX-GW2-DMX-2TE



KNX-GW2-RS232-RS485



KNX-GW2-RS485-2TE

Gateway MBUS



KNX-GW-MBUS-SK01



KNX-GW-MBUS-REG



KNX-GW-MBUS-SK08

Gateway MODBUS



KNX-GW-MODBUS-SK07-RS485



KNX-GW-MODBUS-RS485-REG

F
Gateways

Gateway HAN P1



KNX-GW-HAN-MBUS-REG



KNX-GW-HAN-P1-REG

KNX-Gateway 2 DMX / RS232 / RS485

Technical Data

Outline:	2TE (35 x 90 x 63 mm) 6TE (107 x 75 x 31 mm)
Protection class:	IP 20
Operating temperature:	-5 .. +45 °C
KNX-load:	20 .. 32 VDC / 150 mW
Power supply:	9 .. 30 VDC / 100 mA
Data rates:	RS232 (DMX) 250.0 kBaud max. RS485 (DMX) 115.2 kBaud max.



KNX-GW2-DMX



KNX-GW2-DMX-2TE

KNX-GW2-DMX

The KNX-DMX Gateway is an interface between the KNX bus and the DMX512 bus. It combines elements of building automation with a variety of lighting and special effects devices for every need.

The KNX-DMX Gateway is unidirectional, receives data telegrams on the KNX bus and transmits the data onto the DMX512 bus. The interface allows the DMX512 actuators to communicate via the KNX bus using the full range of the channel.

Windows 10 compatible
Extended Memory

Parametrization is done by the dedicated program KNX-DMX-GW-II-Configurator.

Article	Article No.
KNX-GW2-DMX (6TE)	40200186
Article	Article No.
KNX-GW2-DMX-2TE	40200182



KNX-GW2-RS232-RS485



KNX-GW2-RS485-2TE

KNX-GW2-RS232-RS485

The KNX-GW2-RS232-RS485 is a gateway between the KNX-Bus and the serial lines RS232 or RS485. It can be used to easily connect devices with serial data of both directions like multimedia equipment or alarm systems to the KNX-Bus.

Windows 10 compatible
Extended memory

The parametrization is done by the new associated software KNX-SERIAL-GW-II-Configurator.

Article	Article No.
KNX-GW2-RS232-RS485 (6TE)	40220186
Article	Article No.
KNX-GW2-RS485-2TE	40210182

Further information about the associated software is available on request.



KNX-SERIAL-GW-II-Configurator **KNX-DMX-GW-II-Configurator**

KNX-Gateway M-BUS

Application: KNX bus coupling for counter with M-Bus interface

The M-Bus gateway is a Master for M-Bus Systems according to the DIN EN 13757-2/3. The Master can supply and service up to 3 M-Bus devices. There are 32 M-Bus data points available which can be assigned freely to the different devices.
KNX Readable Data:

For each M-Bus device:

- device data
- Secondary Address

Per M-Bus data point (32 data points) - as:

- 6-Byte Metering Value
- 4-Byte Float
- 4-Byte unsigned Integer
- Date
- Time



KNX-GW-MBUS-SK01

M-Bus Gateway for up to 3 M-Bus devices

Plastic housing: (72 x 64 x 40) mm
IP54/65

Article

KNX-GW-MBUS-SK01

Article No.

60400001



KNX-GW-MBUS-REG

M-Bus Gateway for up to 3 M-Bus devices

DIN Rail mounted housing 2 units width (35 x 90 x 63 mm)
IP20

Article

KNX-GW-MBUS-REG

Article No.

60400002



KNX-GW-MBUS-SK08

M-Bus Gateway for up to 3 M-Bus devices

Each M-Bus device with its own Screw-Type Terminal for M-Bus ID independent device identification.

Plastic housing: (115 x 65 x 55) mm
IP54/65

Article

KNX-GW-MBUS-SK08

Article No.

60400008

KNX Gateway MODBUS

Application:	KNX bus coupling for counters with Modbus/RTU interface	The bus coupler represents a bus master of the Modbus/RTU interface. A connection can be made via RS485 (maximum 32 subscribers incl. Master) or RS232 (P2P). This option must be selected upon order and cannot be changed by application. 32 M-Bus data points are available, they can be assigned freely to the different devices.
--------------	---	--



KNX-GW-MODBUS (SK07-Gehäuse)

Modbus gateway for up to 32 data points

Standard Interface RS485
(RS232 can be realized)

SK07 Plastic housing:
50 x 50 x 20 mm, 58mm diagonal
(for in-wall mounting in dry interiors)
IP20

Article	Article No.
KNX-GW-MODBUS-RS485	40300007
KNX-GW-MODBUS-RS232	40310007

KNX-GW-MODBUS-RS485-REG

Modbus gateway for up to 32 data points

Standard Interface RS485
(RS232 can be realized on request)

DIN Rail mounted housing 2 units width (35 x 90 x 63 mm)
IP20



Article	Article No.
KNX-GW-MODBUS-RS485-REG	40300002

KNX Gateways

HAN

arcus-eds

Content

KNX Gateway HAN-MODBUS

Application: KNX bus coupling for counters with HAN interface.
The HAN gateway is a slave for the HAN-bus which is similar to the MBUS.

Each used meter needs one gateway and one Gateway can only serve one meter.

In Norway the device is only available from function Products AS (<https://www.function.no/produkter>) and support is only available from them.



KNX-GW-HAN-MODBUS-REG

HAN gateway for one HAN Meter from

- Kaifa
- Kamstrup
or
- AIDON

DIN-Rail mounted housing
2 units width (35 mm)
IP20

1,5 m connection cable to meter included

Article

KNX-GW-HAN-MODBUS-REG

Article No.

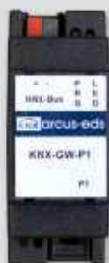
60400012

KNX Gateways HAN-P1

Application: KNX bus coupling for counters with P1 interface.
The P1 gateway is a slave for the P1-bus which is similar to the MBUS.

Each used meter needs one gateway and one Gateway can only serve one meter and up to four externally coupled meters.

In Belgium the device is only available from Siconia meter and support is only available from Vecolux.



KNX-GW-HAN-P1-REG

P1 gateway for one P1 Meter from

- Siconia

DIN Rail mounted housing
2 units width (35 mm)
IP20

2,5 m connection cable to meter included

Article

KNX-GW-HAN-P1-REG

Article No.

60400013

F

Gateways



KNX Smart Metering

KNX Smart Metering

Impulse Counter / In Home Water Meter / Heat Quantity Meter

arcus-eds

Content

Impulse Counter



KNX-IMPZ1-SK01



KNX-IMPZ1-REG



KNX-IMPZ2-SK01



KNX-IMPZ2-REG

In Home Water Meter



KNX-IMPZ_WZ-M

Heat Meter



Dialog WZ SensoStar E

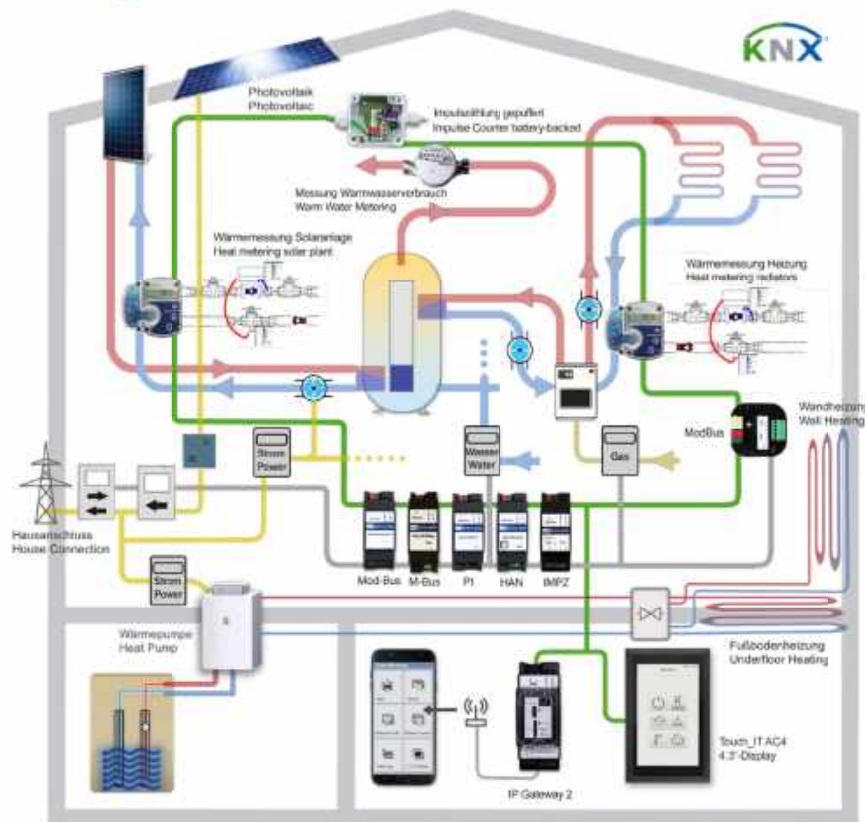
Gateways Smart Metering



Our **Smart Metering Gateways MBUS | MODBUS | P1 | HAN** you find in **Section F Gateways**



Smart Metering



Impulse Counter IMPZ

This impulse counting modules with battery backed up memory and KNX coupling unit are designed for universal monitoring of consumption values in the KNX bus. The impulse counting module is available in an outdoor / damp room compliant IP54/65 plastic housing or as DIN Rail mounted device. The internal lithium backup battery enables the functionality without KNX bus connection for over 5 years

Meters with potential free impulse outputs (S0, relay, reed-switch) can be connected to the KNX-Bus independent of their medium. This measurement concept allows retrofitting smart metering into old installations

The KNX-IMPZ2 contains two independent counters which can be used for different meters or even different media. Furthermore the two inputs can act as one meter with two tariffs, switching between the tariffs is done by the second input or via KNX.

In Home Water Meter WZ-M

The in home water meter is a package of the calibrated water meter „WZ-M“ from NZR and the impulse counting unit SK01-IMPZ1 by Arcus-EDS GmbH.

The internal lithium back up battery enables the functionality without KNX bus connection for over 5 years.

Heat Quantity Meter Dialog SensoStar E

The heat meter consists of a calibrated meter from Engelmann, type "SensoStar E," and an M-Bus gateway KNX-GW-MBUS-SK01 with integrated bus coupler from Arcus-EDS GmbH.

All meters are MID approved and delivered calibrated.

The electronic counter has an internal lithium battery with a lifespan of 6 years and 1 year of backup power.

Impulse Counting Module KNX-IMPZ

Application: Integration of consumption meters with impulse outputs into the KNX bus

The counting unit is designed to be used with a S0-Interface (according EN 43864) but can also be used with other impulse outputs with a potential free contact.

KNX Readable Data:

- Serial number
- Accumulated consumption m3
- Current flow rate m3
- Time
- Date
- Consumption value
- Last reference value
- Last reference date
- Next reference date
- Consumption Reset
- Consumption last reset time
- Consumption last reset date



KNX-IMPZ1-SK01

1 Channel S0 counter module
Plastic housing: (72 x 64 x 40) mm
IP54/65

Article

KNX-IMPZ1-SK01

Article No.

60201101



KNX-IMPZ1-REG

DIN Rail mounted housing
2 units width (35 mm)
IP20

Article

KNX-IMPZ1-REG

Article No.

60201102



KNX-IMPZ2-SK01

2 Channel S0 counter module
Plastic housing: (72 x 64 x 40) mm
IP54/65

Article

KNX-IMPZ1-SK01

Article No.

60201201



KNX-IMPZ2-REG

2 Channel S0 counter module
DIN Rail mounted housing
2 units width (35 mm)
IP20

Article

KNX-IMPZ2-REG

Article No.

60201202

In Home Water Meter Modularis WZ-M



- KNX Readable Data:
- Serial number
 - Accumulated volume in l or m3
 - Current flow rate in l or m3/unit of time
 - Current time
 - Current date
 - Last reference date
 - Last reference value
 - Next reference date
 - Consumption value
 - Consumption Reset
 - Consumption last reset date
 - Consumption last reset time

- Connection box:
- Plastic housing (72 x 64 x 40) mm

Protection class IP54/65

WZ-M Technical Data		Remarks	Article No.
Nominal width (DN)	15	WZK-M cold 30°C	60201-75124015
Nominal flow	1.5 m³/h		
Connection external thread - meter	3/4 "	WZW-M warm 90°C	60201-75124515
Connection external thread - thread	1/2 "		
Length	80 mm		
Nominal width (DN)	15	WZK-M cold 30°C	60201-75124115
Nominal flow	1.5 m³/h		
Connection external thread - meter	3/4 "	WZW-M warm 90°C	60201-75124615
Connection external thread - thread	1/2 "		
Length	110 mm		
Nominal width (DN)	20	WZK-M cold 30°C	60201-75124025
Nominal flow	2,5 m³/h		
Connection external thread - meter	1 "	WZW-M warm 90°C	60201-75124525
Connection external thread - thread	3/4 "		
Length	130 mm		



Technical data and companion dimensions are available at NZR. www.nzr.de
The second part of our article no. equals the the NZR-article no.

All meters of the series WZ-M are equipped with an internal impulse module, they are MID approved and calibrated.

KNX-Heatmeter Dialog SensoStarE
with SK10 M-Bus Module



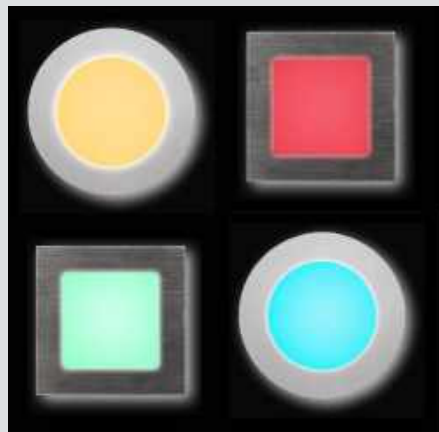
KNX Readable Data:

- Energy
- Volume
- Power
- Flow rate
- Flow temperature
- Return temperature
- Temperature difference
- Date / Time
- Operational time

Temperature range: 0 .. 150°C
Temperature difference: 0 .. 100 K

Arithmetic unit: IP54
KNX module: IP54/65

KNX Heat Quantity Meter Dialog WZ-R5.M		Temperature Probe	Article No.
Nominal diameter (DN)	15		6041-85223106
Minimum flow	0.6 m³/h		
Connection AG meter	3/4 "		
Connection AG thread	1/2 "		
Length	110mm		
Nominal diameter (DN)	15	PT1000 2-wire technology Cable length: 1.5m direct measuring	6041-85223115
Minimum flow	1.5 m³/h		
Connection AG meter	3/4 "		
Connection AG thread	1/2 "		
Length	110mm		
Nominal diameter (DN)	20		6041-85223125
Minimum flow	2.5 m³/h		
Connection AG meter	1 "		
Connection AG thread	3/4 "		
Length	130mm		



KNX-LED-Driver-Unit



KNX-LED-Driver Unit

LED4



KNX-LED4-ARE-H
KNX-LED4-ARB-H



KNX-LED4-AQS
KNX-LED4-AQS

LED 4 - RGB Amber



KNX-LED4 offers light colours, square and round style (half bulb) variants

Flat wall light with light in a wide range of colours, illuminated sign

KNX LED4 is an RGB(A) LED lamp controlled via KNX Bus.
The light colour for warning or information signaling can be selected via the KNX bus.
This opens up the possibility of professional access control to conference rooms, switch rooms, treatment rooms or hotel rooms.

Luminous flux: 150 lm
Connection power: 3 W
Luminous colour: RGB + amber

- fixed selectable saturated colours or 16 Million adjustable colours
- auxiliary voltage 24 - 32VDC required
- adjusting via complex KNX-application



KNX-LED4 - half bulb

Article		Article No.
KNX-LED4-ARE-H	Aluminium anodized	41040243
KNX-LED4-ARB-H	Aluminium black anodized	41040244



KNX-LED4 - square flat

Article		Article No.
KNX-LED4-AQ S	Aluminium anodized	41040223
KNX-LED4-AQ B	Aluminium black anodized	41040224



KNX-LED-Driver Unit

LED driver for controlling RGB and dual white LED lights or strips
Colour temperature adjustable, dimmable
2 binary contacts

Total power: 12VDC / 25W oder 24VDC / 50W
IP20, standard flush mounting (60/68 mm)

Article	Article No.
KNX-LED-Driver Unit	41040070

KNX Components for Building Automation

arcus-eds

Content



KNX System Devices

KNX System Devices

IP / LAN / Arcus-iButton / Choke / GPS

arcus-eds

Content



IP / LAN



KNX-GW2-IP-2TE

Arcus-iButton



KNX-iButton-SK07



KNX-iButton-SK08

Choke



KNX-Drossel-DR16

GPS



SK10L-GPS-SC-L

I

System

SENSOR SYSTEM HLK 305

RTR
Temperature
Air Humidity
CO2
VOC
Brightness



SPECIAL SENSORS

Soil Moisture
Water Quality
Level Sensor System
Global Radiation



SMART METERING

Heat Quantity
Impulse Counter
M-Bus
Modbus
HAN



VENTILATION / HEATING

Valve Control
Ventilation Control
LUNOS



LIGHTING

LED Driver
LED Light



DMX
Gateway



MULTIMEDIA

RS232
RS485
Gateway



Arcus-iBUTTON



VISUALIZATION

Visualization & Control
4.3" DiemTouch IT



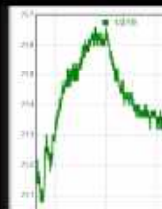
GPS



KNX
Choke



KNXnet / IP-Routing
Busmonitor
KNX Telegram Logger
exclusive µ-SD-Card
Arcus-IP-VISU



KNX-IP-Gateway 2



KNX-GW2-IP-2TE

IP-Gateway 2 to link the ETS (PC software tool) to the KNX bus

Description:

- 16 KNXnet / IP Tunnel
- KNXnet/IP Routing
- Busmonitor
- No ETS application required
- Configuration via web browser
- Group monitor in web browser
- Local Group Cache
- Extensive KNX telegram logger
- Logs all group addresses on the bus
- Graph view in web browser
- CSV export
- NTP-client and KNX timeserver function
- Up to 32 Events for scripts
- Events triggered by time of day or telegrams
- 256 timers configurable in groups
- Messenger client for notifications over XMPP (Jabber)
- Email notifications
- Framework for HTTP-requests
- HTML-Visualization
- OpenVPN supported
- Node-RED preinstalled
- MQTT Server preinstalled
- 4 Kernels, 1GHz each
- 4 GByte internal memory for data storage
- 1 GByte RAM
- µ-SD-Card slot for memory extension (exclusive SD-Card)
- USB-Ports for Configuration and extensions (special drivers on request)
- Additional Power 9..32V needed
- KNX bus connection < = 10mA

Security:

- SSH/SFTP ssl-encrypted
- Different passwords for different functions
- Security switch to deactivate different functions (configurable)

Open system:

- Data transfer over sftp
- Console over ssl

KNX-GW2-IP-2TE

Operating temperature: -25 .. +55 °C
DIN Rail mounted housing 2 units width (35 x 90 x 63 mm)
IP20

Article

KNX-GW2-IP-2TE

Article No.

40400003



Further information about the associated extension software updates Arcus-IP-VISU and Access-Control is available on request.



Arcus-IP-VISU



Access-Control

Arcus-iButton-KNX

KNX-based Presence and Access Control



KNX-iButton-SK07



KNX-iButton-SK08



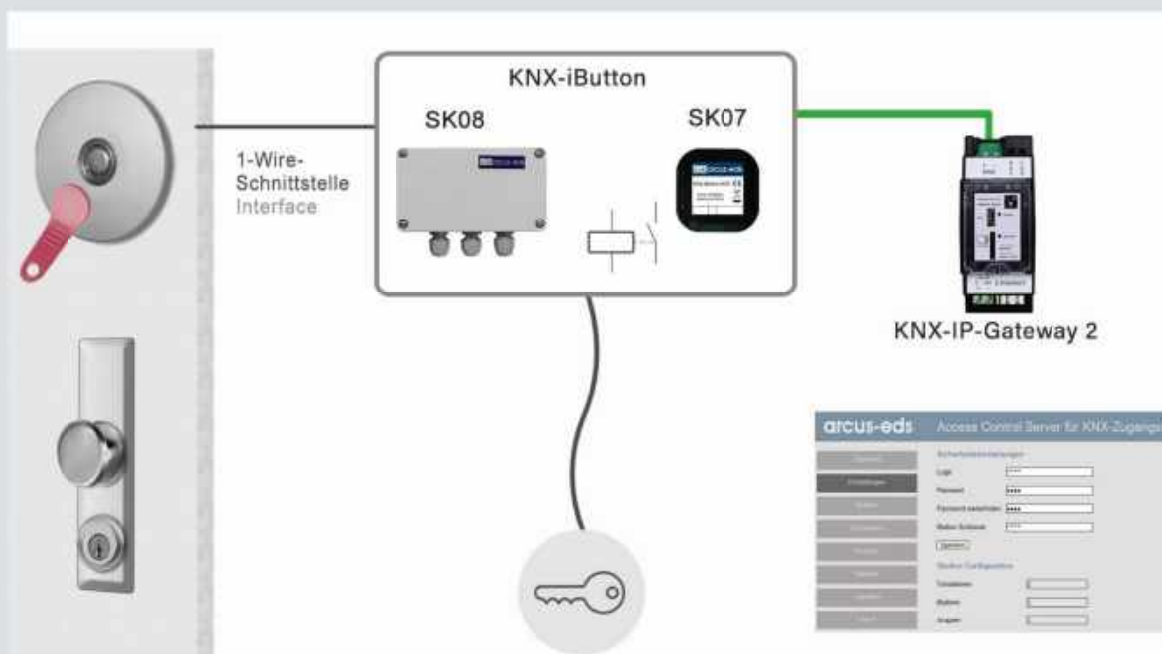
Accessory not included in delivery

Short Description:

- iButton® Door Station (Terminal) for use with Arcus-EDS Access Server
- For all iButton® with internal serial numbers
- Supports SHA256 iButtons with challenge-response handshake
- Communication with Access Server with strong encryption
- Requires an Arcus-EDS Access server for key management
- Access server manages up to 63 door stations, 256 keys and 256 groups
- Access server with access log
- Access server with (S) FTP client for external storage of access logs
- For systems with medium and low safety requirements
- Relay output for door opening
- For any contacting devices and iButton®
- Connection for illuminated iButton contacts (Bicolour red / green with KK, KA or anti-parallel connection)
- Connection for piezo signal transmitter (3V)
- No external supply voltage required
- Programming and setup via the ETS
- IP65 (SK08) or IP20 (SK07) available
- Temperature range -5 ... +40°C / Humidity 5...95% RH non-condensing
- KNX bus connection <= 10mA

Applications:

- Presence control
- Personalized control
- Access control in installations without high security requirements





KNX-iButton-SK07

KNX-iButton SK07

Operating temperature: 0 .. +70 °C
Operating humidity (KNX module): 0 .. 95% r.H non-condensing

Relay output: 2x opener / closer

30 VDC, 2A
110 VDC, 0.3 A
125 VAC, 0.5 A

plastic, black

Measurements Housing: 50 x 50 x 20 mm, 58mm diagonal
(for in-wall mounting in dry interiors)

IP20

Article	Article No.
KNX-iButton-SK07	66200007



KNX-iButton-SK08

KNX-iButton SK08

Operating temperature: 0 .. +70 °C
Operating humidity (KNX module): 0 .. 95% r.H non-condensing

Relay output: 2x opener / closer

30 VDC, 2A
110 VDC, 0.3 A
125 VAC, 0.5 A

Plastic, white
On-Wall
Measurements Housing: 115 x 65 x 55 mm

IP20

Article	Article No.
KNX-iButton-SK08	66200008



Further information about the associated extension software update Access-Control on request.



Access-Control



KNX-Drossel-DR16 (Choke)

Choke to decouple the KNX bus from the supply voltage.

Rated voltage: 32 VDC
 Rated current: 1600 mA
 Operating temperature: -25 .. +55 °C

DIN Rail mounted housing
 2 units width (35 mm)

IP20

Article

Article No.

KNX-Drossel-DR16

66000016



SK10L-GPS-SC-L

Universal timer in the KNX bus
 Daily and weekly time switching clock
 Brightness and temperature sensor
 Time of sunset
 GPS coordinates

Operating temperature: -25 .. +55 °C
 Measured temperature range -25 .. +55 °C
 Measured brightness range: 3 .. 220.000 lux ± 20%
 Plastic housing: (72 x 64 x 45) mm

The unit is mounted outdoors in the shade but with good view of the sky.

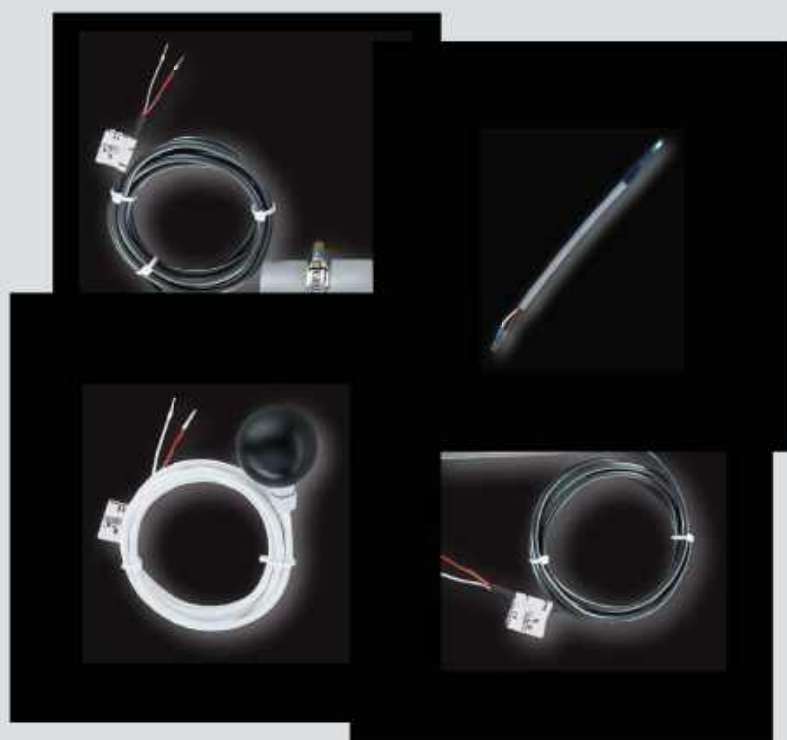
IP54/65

Article

Article No.

SK10L-GPS-SC-L

66100001



Components / Replacement Parts

for HVAC Sensor Systems

arcus-eds

Content

HVAC - Components



SK30-PT1000
white / anthracite



OFTF PT1000



HTF PT1000



GTF PT1000 TPE



ALTF1 PT1000



ALTF2 PT1000



ATF2 PT1000



ESTF PT1000



DTF PT1000 /
DFF (Sensirion)

RPTF1 PT1000



RPTF2 PT1000



RPFF
(Sensirion)



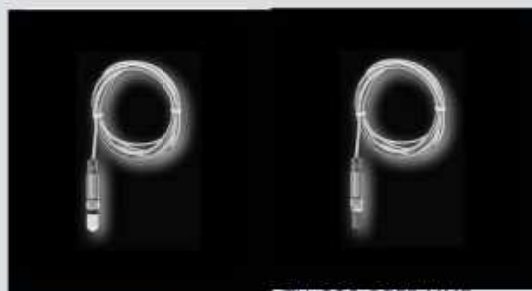
RPFF-MMF
(Sensirion)



PT1000-SK07



HTU21-SK07



TH-CO2-RPFF

TH-CO2-RPFF-MMF



In-Wall Mounted Probes PT1000 IP20

Temperature probe PT1000 with screw-in clamps

Mounted on in-wall pattress (60/68 mm)
Compatible with switching systems (e.g. Gira, Merten) in standard 55 mm.

Measured temperature range: -25 .. + 55 °C

Indoor use only
IP20

Article	Article No.
SK30-PT1000 white	90101301
SK30-PT1000 anthracite	90101302



Feed / Surface Mounted Probe PT1000 IP54/65

Feed temperature / surface probe

Measured temperature range: -30 .. +105 °C
Connecting cable: PVC 1.5 m

IP54/65

Article	Article No.
0 FTF PT1000 PVC	90100001



Sleeve Probe PT1000 IP54/65

Article	Article description	Article No.
HTF PT1000 PVC	Measured temperature range: -35 .. +105 °C Connecting cable: PVC 1.5 m IP54/65	90100002
HTF PT1000 Silicone	Measured temperature range: -50 .. +180 °C Connecting cable: Silicone 1.5 m IP54/65	90100003
HTF PT1000 PTFE	Measured temperature range: -50 .. +250 °C Connecting cable: PTFE 1.5 m IP68	90100055



TPE Temperature Sensor PT1000 IP68

waterproof, salt water resistant
PT1000
Measuring Range Temperature: -40 .. 105 °C

Cable Length: 2 m
IP68

Article	Article No.
GTF PT1000 TPE	90100057

Components / Replacement Parts

for HVAC Sensor Systems

arcus-eds

Content



Pipe Feed Probe PT1000 IP54/65

Article	Article description	Article No.
ALTF1 PT1000 PVC	Feed temperature / pipe feed probe Measured temperature range: -35 .. +105 °C Connecting cable: PVC 1.5 m	90100004

ALTF1 PT1000 Silicone	Feed temperature / pipe feed probe Measured temperature range: -35 .. +180 °C Connecting cable: Silicone 1.5 m	90100005
-----------------------------	--	----------



Article	Article description	Article No.
ALTF2 PT1000	Feed temperature / pipe feed probe in plastic housing with contacting probe (PT1000) on the rear side of the terminal box. Measured temperature range: -30 .. +110 °C	90100006



Outdoor / Damp Room Temperature Probe PT1000 IP54/65

Outdoor / damp room temperature probe in plastic housing (PT1000)

Operating range: -30 .. +90 °C

Article	Article No.
ATF2 PT1000	90100007



Screw-In Temperature Probe PT1000 IP54/65

Article	Article description	Product Group	List Price	Article No.
ESTF PT1000-50 PVC	G 1/2" 50 mm V4A Operating range: -35 .. +105°C Connecting cable: PVC 1.5 m			90100008

ESTF PT1000-100 PVC	G 1/2" 100 mm V4A Operating range: -35 .. +105 °C Connecting cable: PVC 1.5 m			90100009
---------------------------	---	--	--	----------

ESTF PT1000-50 Silicone	G 1/2" 50 mm V4A Operating range: -50 .. +180 °C Connecting cable: Silicone 1.5 m			90100010
-------------------------------	---	--	--	----------

ESTF PT1000-100 Silicone	G 1/2" 100 mm V4A Operating range: -50 .. +180 °C Connecting cable: Silicone 1.5 m			90100011
--------------------------------	--	--	--	----------



Ceiling Mounted Temperature Probe PT1000

Ceiling Mounted Temperature Probe

Measured temperature range: -20 .. +90 °C
Connecting cable: ca. 2 m

IP30

Article	Article No.
DTF PT1000	90100012



Pendulum Room Probe for Temperature PT1000

Pendulum room probe for temperature PT1000
in protecting tube

Probe: 90 mm
Operating range: -5 .. +60 °C
Connecting cable: PVC 1.5 m

Article	Article No.
RPTF1 PT1000	90100050

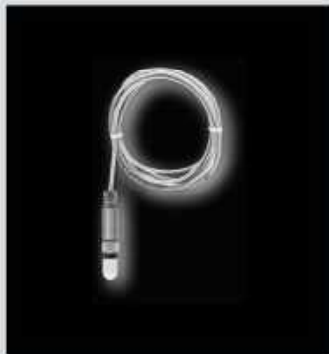


Pendulum Room Probe for Temperature PT1000

Pendulum room probe for temperature PT1000 in black plastic sphere (Ø 50 mm) for the
acquisition of the temperature caused by radiant heat.

Operating range: -5 .. +60 °C
Connecting cable: PVC 1.5 m

Article	Article No.
RPTF2 PT1000	90100051



Pendulum Room Probe for Temperature and Humidity

Pendulum room temperature / humidity probe with plastic sinter filter

Probe: 90 mm
 Measured temperature range: -30 .. +80 °C
 Measured humidity range: 0 .. 100% r.H.
 Connecting cable: PVC 2 m

Article

RPFF (Sensirion)

Article No.

90100054



Pendulum Room Probe for Temperature and Humidity (Condensation Proof)

Pendulum room humidity / temperature probe with metal membrane filter (condensation proof)

Probe: 90 mm
 Measured temperature range: -30 .. +80 °C
 Measured humidity range: 0 .. 100% r.H.
 Connecting cable: PVC 2 m

Article

RPFF-MMF (Sensirion)

Article No.

90100056



Pendulum Room Probe for Temperature / Humidity / CO2

Pendulum room temperature / humidity probe with plastic sinter filter

Probe: 120 mm
 Measured temperature range: -25 .. +80°C
 Measured humidity range: 0 .. 100% r.H.
 Messbereich CO2: 0 .. 40000 ppm
 Connecting cable: PVC 2 m

Article

TH-CO2-RPFF

Article No.

90100054



Pendulum Room Probe for Temperature / Humidity (Condensation Proof) / CO2

Pendulum room humidity / temperature probe with metal membrane filter (condensation proof)

Probe: 120 mm
 Measured temperature range: -25 .. +80°C
 Measured humidity range: 0 .. 100% r.H.
 Messbereich CO2: 0 .. 40000 ppm
 Connecting cable: PVC 2 m

Article

TH-CO2-RPFF-MMF

Article No.

90100056



Ceiling Mounted Humidity Probe PT1000

Ceiling Mounted Humidity Probe
Measured temperature range: -20 .. +80 °C
Measured humidity range: 0 .. 100% r.H.
Connecting cable: ca. 2 m
IP30

Article	Article No.
DFF (Sensirion)	90100016



Temp-probe PT1000, assembled for SK07

Measured temperature range: -50 .. +150 °C
Connecting cable: PVC 10 cm

Article	Article No.
PT1000-SK07	99101071



Temp-Humid probe, assembled for SK07

Measured temperature range: -25 .. +80 °C
Measured humidity range: 0 .. 100% r.H.
Connecting cable: PVC 12 cm

Article	Article No.
HTU21-SK07	99121071

Components / Replacement Parts

for S8 Sensor Systems

arcus-eds

Content

Fill Level Components



SK80-F-E-15/-30/-40



U-5



PM-5 / T-PM-5 /
T-PM-10



T-PMO-5 / T-PMO-10

Water Quality



WAQ

Soil Moisture



WMT

Global Radiation



BGT-SR1



Extension Cable for SK80-F and SK80-FN

15 m / 30 m / 40 m length

Article	Article No.
SK80-F-E-15	90800015
SK80-F-E-30	90800030
SK80-F-E-40	90800040



Ultrasonic Sensor for SK80-F and SK80-FN

Measuring range / accuracy:
 0,3 .. 5m / 0,5% FS
 Cable Length: 10 m
 Dimensions: DxD 68x80 mm
 IP65

Article	Article No.
U-5	90800105

Hydrostatic Sensor for SK80-F and SK80-FN (Water)

Dimensions sensor head: DxD 30 x 120 mm
 IP68



Article	Article No.
PM-5	Measuring Range: 5 m Accuracy: 0,5% FS Cable Length: 10 m 90200205
T-PM-5 (Temperature Detection)	Measuring Range: 5 m Accuracy: 0,5% FS Cable Length: 10 m 90800305
T-PM-10 (Temperature Detection)	Measuring Range 10 m Accuracy: 0,5% FS Cable Length: 15 m 90800310

Hydrostatic Sensor for SK80-F and SK80-FN (Heating Oil)

Dimensions sensor headf: DxD 27 x 132 mm
 IP68



Article	Article No.
T-PMO-5 (Temperature Detection)	Measuring Range: 5 m Accuracy: 0,5% FS Cable Length: 10 m 90800370
T-PMO-10 (Temperature Detection)	Measuring Range: 10 m Accuracy: 0,5% FS Cable Length: 15 m 90800380

Components / Replacement Parts

for S8 Sensor Systems

arcus-eds

Content



Water Quality Probe pH and ORP for WAQ

Standard Measuring Electrode Units pH & ORP for SK08-WAQ

Article

WAQ Probe Set single-rod measuring cells

Article No.

91110020



Soil Moisture Probe Watermark® WMT

Article

WMT Watermark® - Soil Moisture Probe with Temperature Probe incl. connection cable (5 m) orderable until 50 m

Article No.

91100000



Global Radiation Probe for GLBS

Article

BGT-SR1 Global radiation probe for SK08-GLBS

Article No.

90804011

Imprint

Editor: Arcus-EDS GmbH, Rigaer Str. 88, 10247 Berlin

© Arcus-EDS GmbH

Responsible for the contents: Hjalmar Hevers, Sascha Bergmann

Reprinting in part or in whole is only permitted with the prior permission of Arcus-EDS GmbH.

All information is supplied without liability. Technical specifications and prices can be subject to change

July 2024

Picture Front: iStock.com/yogesh_more ID:467036912
Touch_IT Background Pictures
2mmedia/stockadobe.com #257449599
2mmedia/stockadobe.com #247528565

Liability

The choice of the devices and the assessment of their suitability for a specified purpose lie solely in the responsibility of the buyer. Arcus-EDS does not take any liability or warranty for their suitability. Product specifications in catalogues and data sheets do not represent the assurance of certain properties, but derive from experience values and measurements. A liability of Arcus-EDS for damages caused by incorrect operation/projecting or malfunction of devices is excluded. The operator/project developer has to make sure that incorrect operation, planning errors and malfunctions cannot cause subsequent damages.

Safety Regulations

Attention! Installation and mounting must be carried out by a qualified electrician.

The buyer/operator of the facility has to make sure that all relevant safety regulations, issued by VDE, TÜV and the responsible energy suppliers are respected. There is no warranty for defects and damages caused by improper use of the devices or by noncompliance with the operating manuals.

Warranty

We take over guarantees as required by law.
Please contact us if malfunctions occur. In this case, please send the device including a description of the error to the company's address named below.

Registered Trademarks

The CE trademark is a curb market sign that exclusively directs to authorities and does not include any assurance of product properties.



Registered trademark of the Konnex Association.



Manufacturer

arcus-eds